

Uncompensated Health Care Report

Wisconsin Hospitals

Fiscal Year 2005

January 2007

WHA Information Center

FOREWORD

WHA Information Center has assumed responsibility from the Department of Health and Family Services, starting with fiscal year (FY) 2003, to prepare an annual report on uncompensated health care in Wisconsin hospitals [including general medical-surgical (GMS), psychiatric (psych), alcohol and other drug abuse (AODA), and rehabilitation (rehab) hospitals]. This report summarized data collected from the *FY 2005 Hospital Uncompensated Health Care Plan* and the *FY 2005 Hospital Fiscal Survey*.

This report is not an exhaustive compilation of all data collected through the surveys. Readers desiring additional information on uncompensated health care or on a specific hospital should contact WHA Information Center, LLC, regarding the availability and cost of specific data requests.

Questions about this report should be directed to:

Joe Kachelski
Vice President, WHA Information Center, LLC
P.O. Box 259038
Madison, WI 53725-9038
608-274-1820

or

Julie Callies, RHIA
Director, WHA Information Center, LLC
P.O. Box 259038
Madison, WI 53725-9038
608-274-1820

TABLE OF CONTENTS

Introduction 1

Summary Data: Fiscal Year 2005 2

What is Uncompensated Health Care? 3

Measuring Hospital Contributions to their Communities: A Complex Issue 3

County General Relief..... 4

Uncompensated Health Care Provided in Fiscal 2005 5

Uncompensated Health Care Provided as a Percentage
of Patient Revenue 7

Uncompensated Health Care as a Percentage of Non-Government
Patient Revenue 11

Uncompensated Health Care Projections for Fiscal Year 2006..... 13

Basis for Projections 14

Uncompensated Health Care at Cost 15

Verifying Need for Charity Care 16

Notifying the Public Regarding Charity Care Availability 16

Hill Burton Program..... 19

Glossary 20

Appendix 1:
Charity Care, Bad Debt, and Total Uncompensated Health Care as a
Percentage of Total Gross Patient Revenue 22

Appendix 2:
Charity Care, Bad Debt, and Total Uncompensated Health Care as a
Percentage of Total Gross Non-Government Patient Revenue 27

Appendix 3:
Number of Patients Receiving and Projected to Receive Uncompensated Health Care 32

Appendix 4:
Wisconsin Hospitals with County General Relief Revenue Greater than \$500,000 or
Greater than One Percent of Total Gross Revenue..... 37

Appendix 5:
FY 2004 Hospital Uncompensated Health Care Plan and
FY 2004 Hospital Fiscal Survey 39

INTRODUCTION

All Wisconsin hospitals [including general medical-surgical (GMS), psychiatric (psych), alcohol and other drug abuse (AODA), and rehabilitation (rehab) hospitals] that are not state or federal facilities are required by law to publicly report annual uncompensated health care information. Each hospital submits a Fiscal Year (FY) Uncompensated Health Care Plan and FY Hospital Fiscal Survey within 120 days after the close of the hospital's fiscal year.

This report is based on data collected from 143 hospitals that submitted uncompensated health care and fiscal information for their entire FY 2005.

The following information is gathered annually from each surveyed hospital:

- The hospital's total charges attributed to charity care, bad debt, and total uncompensated health care in its most recently completed fiscal year. This information is obtained from final audited financial statements, if at all possible;
- The number of patients (both inpatients and outpatients) to whom the hospital provided uncompensated health care services during the most recently completed fiscal year;
- The projected total charges attributed to charity care, bad debt, and uncompensated health care for the next fiscal year;
- The number of patients (both inpatients and outpatients) to whom the hospital expects to provide uncompensated health care services in the next fiscal year;
- The hospital's rationale for uncompensated health care projections;
- Definitions of the terms the hospital uses in its uncompensated health care plan that may be subject to interpretation;
- The procedures the hospital uses to determine a patient's ability to pay for health care services, and to verify financial information submitted by the patient; and
- Any required Hill-Burton obligations, when those obligations will be satisfied, and the dollar amount still under obligation.

Uncompensated care as a percentage of total charges remains relatively stable as a statewide average from year to year, even though the percentage reported by individual facilities may fluctuate. A facility may experience year-to-year fluctuations in its uncompensated care percentage because it is small (changes in small numbers result in large percentage changes), because of accounting system decisions (the fiscal year in which to count a given instance of uncompensated care), because it provided care to one or more patients whose uncompensated costs were especially high compared to its patients in previous years, or for other reasons.

SUMMARY DATA: FISCAL YEAR 2005

This document examines uncompensated health care data for Wisconsin hospitals. This report is based on data submitted by hospitals for their entire fiscal year 2005 (FY 2005).

- One hundred forty-three Wisconsin hospitals provided \$736 million of uncompensated health care services to their patients in FY 2005, either as charity care (\$338.6 million) or as bad debt (\$397.5 million).
- General medical-surgical (GMS) hospitals provided \$319.6 million in charity care and incurred \$393.3 million in bad debt, while specialty facilities reported \$19 million in charity care and \$4.3 million in bad debt.
- Total uncompensated health care grew 27 percent, from \$578 million in FY 2004 to \$736 million in FY 2005. GMS hospitals reported a 28-percent increase in uncompensated health care, from \$555.7 in FY 2004 to \$712.8 million in FY 2005. Reported uncompensated health care for specialty facilities increased 4.6 percent, from \$22.3 million in FY 2004 to \$23.3 million in FY 2005.
- Sixty-nine of the 143 hospitals included in this report each delivered more than \$2 million of uncompensated health care in FY 2005. Of these, 41 delivered more than \$2 million in charity care and 53 incurred more than \$2 million in bad debt. Hospitals in Milwaukee County alone accounted for just over 34 percent, or \$255.3 million, of overall uncompensated health care dollars. Milwaukee hospitals delivered \$136.9 million in charity care, or 40 percent of the statewide total, and incurred \$118.4 million in bad debt, or 30 percent of the statewide total.
- Measured as a percentage of total gross patient revenue (charges), total uncompensated health care at GMS hospitals rose from 3.0 percent in FY 2004 to 3.2 percent in FY 2005. Specialty hospitals' total uncompensated care decreased from 6.8 percent of charges in FY 2004 to 4.2 percent in FY 2005. For all hospitals combined, this measure rose slightly from 3.0 percent in FY 2004 to 3.3 percent in FY 2005.
- Charity care for all reporting hospitals averaged 1.3 percent of gross patient revenue, ranging from 0.0 to 22.5 percent. The average was 1.1 percent for GMS hospitals and 3.0 percent for specialty facilities.
- Bad debt averaged 2.0 percent of gross patient revenue, ranging from -1.3 percent to 6.2 percent. The average was 2.1 percent for GMS hospitals and 1.2 percent for specialty facilities.
- Measured as a percentage of total gross non-government patient revenue, uncompensated health care averaged 7.2 percent at GMS hospitals, 19.0 percent at specialty facilities, and 8.2 percent at all Wisconsin hospitals combined.
- Charity care accounted for 2.6 percent of non-government revenue at GMS hospitals, 15.3 percent at specialty facilities, and 3.7 percent at all hospitals combined. Bad debt accounted for 4.6 percent at GMS hospitals, 3.7 percent at specialty facilities, and 4.5 percent at all hospitals combined.
- In FY 2005, 139 hospitals provided uncompensated health care services to 965,081 patients, up 8.5 percent from served by 136 hospitals in FY 2004.
- Six hospitals still have Hill-Burton obligations because of grants they received between 1946 and 1974 from the federal government. In return for these grants, these hospitals agreed to provide a reasonable amount of reduced-cost or no-cost services.
- In FY 2005, total uncompensated care ranged from -1.2 percent to 32.6 percent at cost, averaging 3.2 percent at all reporting hospitals.
- In FY 2005, total charity care at cost averaged 1.5 percent, or \$171.5 million, and bad debt at cost averaged 1.7 percent, or \$196.5 million.

WHAT IS UNCOMPENSATED HEALTH CARE?

The hospital community has traditionally used the phrase “uncompensated health care” to encompass two components: charity care (also known as community care or indigent care) and bad debt. Each component represents services for which the hospital does not receive payment. Charity care is care for which a hospital does not expect payment because it has been determined that the patient cannot afford to pay. Bad debt, however, comes from care for which payment is expected, but the hospital is unable to collect.

Historically, separating charity care from bad debt has been complex because of the way different hospitals defined and reported these components for accounting purposes. For example, one hospital may have written off charges as bad debt, while another hospital may have called such charges charity care. In the past, some hospitals did not clearly distinguish between charity care and bad debt in their accounting procedures.

Nevertheless, the distinction between charity care and bad debt is important. Charity services are an important indicator of a hospital’s fulfillment of its charitable obligations. The amount of bad debt a hospital incurs, however, can directly influence the amount of charity care that remains available.

Effective in July 1990, The Wisconsin Bureau of Health Information adopted American Institute of Certified Public Accountants (AICPA) guidelines that require hospitals to report charity care as a deduction from revenue and to treat bad debt as an expense. WHAIC continues to use the survey questions and interpretations developed by BHI. Although hospitals retain flexibility in setting their own guidelines for distinguishing charity care from bad debt, the AICPA guidelines have resulted in more accurate and consistent reporting of the components of uncompensated health care over time.

MEASURING CONTRIBUTIONS OF HOSPITALS TO THEIR COMMUNITIES: A COMPLEX ISSUE

Assessing a hospital’s charitable contribution to the community is difficult. Even when charity care and bad debt are clearly separated, measuring what a hospital gives back to the community, or directly comparing one hospital’s contribution to another’s remains a perplexing problem. One reason is that hospitals support their communities through other free or low-cost services, which are not easily quantifiable and which cannot be included in uncompensated health care totals. These services may include blood pressure tests, cholesterol screening, health education programs, and support groups for people with illnesses or other conditions. These additional services are referred to as “community benefits.”

The level of charity care for a particular hospital may reflect a charitable mission of the hospital, or may reflect the socioeconomic conditions of the patients and the service area of the hospital. A relatively low level of charity care does not necessarily indicate a hospital’s lack of commitment to serve the community.

Because of the difficulty in reporting charity care, there are no concrete standards regarding the “appropriate” amount of uncompensated health care a hospital should provide. Many of the circumstances that determine how much uncompensated care a hospital actually delivers are beyond its control.

There is a limit to the amount of uncompensated health care a hospital can provide if it is to remain a financially healthy institution. Ultimately, a facility will face operating losses if enough charges are uncompensated, whether they are attributed to bad debt expense or to charity care. Sometimes a hospital can recover uncompensated health care by shifting costs to other payers, by subsidizing uncompensated charges with non-patient care revenue (e.g., from investments, parking fees, gift shops, endowments), or by increasing prices for hospital services.

The intention of this report is not to evaluate a hospital's provision of uncompensated health care. The intention of this report is to highlight trends in uncompensated health care, to stimulate discussion about how these services affect hospital finances, and to make this information available for public use.

COUNTY GENERAL RELIEF

Effective January 1, 1996, each county determines the health care services it will cover, who is eligible to receive those services, and how the services will be funded.

Many counties cover only selected medical services, and limit payments for medical services to various classes of recipients, such as people with disabilities. Counties are not required to offer a medical services component. However, if counties provide cash benefits, they must offer the medical services component.

Appendix 4 lists the Wisconsin hospitals that had gross county general relief revenue in FY 2005 in excess of \$500,000, or one percent of total gross patient revenue. The dollar amount of gross revenue received from general relief, the proportion of total gross patient revenue that general relief represents, and the average reimbursement rate for county general relief are listed for each facility.

Variation in average reimbursement rates can result from inconsistent reconciliation of payments to charges by pay source. This is more common for hospitals that receive a relatively small amount of total revenue from this payment source.

UNCOMPENSATED HEALTH CARE PROVIDED IN FISCAL YEAR 2005

This report includes data from 130 general medical-surgical (GMS) and 13 specialty (psychiatric, AODA, rehabilitation) hospitals that were required to publicly report uncompensated health care information (see Table 1). Eight of these facilities were owned by a county, 34 by religious institutions, 91 by another not-for-profit institution, four by for-profit partnerships, and six by a for-profit corporation.

Uncompensated health care at Wisconsin hospitals grew from \$578.0 million in FY 2004 to \$736.2 million in FY 2005 (see Table 2).

Table 1. Type of Ownership, Wisconsin Hospitals, FY 2005

| | Number of Hospitals | County | Religious | Other Not-for-Profit | For-Profit Organization |
|----------------------|---------------------|--------|-----------|----------------------|-------------------------|
| All Hospitals | 143 | 8 | 34 | 91 | 10 |
| GMS | 130 | 2 | 31 | 88 | 9 |
| Psych | 10 | 6 | 1 | 3 | - |
| AODA | 1 | - | 1 | - | - |
| Rehab | 2 | - | 1 | - | 1 |

Source: FY 2005 Annual Survey of Hospitals, WHA Information Center, LLC

Table 2. Summary of Uncompensated Health Care Dollars, Wisconsin Hospitals, FY 2003, 2004, and 2005

| | Number of Hospitals | Charity Care | Bad Debt | Total Uncompensated Health Care |
|-----------------------------|---------------------|----------------|----------------|---------------------------------|
| FY 2003 | | | | |
| All Hospitals | 143 | \$196,417,251 | \$299,801,329 | \$496,218,580 |
| GMS Hospitals | 130 | \$181,230,597 | \$294,908,076 | \$476,138,673 |
| Specialty Facilities | 13 | \$15,186,654 | \$4,893,253 | \$20,079,907 |
| FY 2004 | | | | |
| All Hospitals | 142 | \$ 234,432,431 | \$ 343,586,109 | \$ 578,018,540 |
| GMS Hospitals | 129 | \$ 215,883,831 | \$ 339,847,171 | \$ 555,731,002 |
| Specialty Facilities | 13 | \$ 18,548,600 | \$3,738,938 | \$22,287,538 |
| FY 2005 | | | | |
| All Hospitals | 143 | \$338,618,925 | \$397,539,614 | \$736,158,539 |
| GMS Hospitals | 130 | \$319,580,184 | \$393,256,279 | \$712,836,463 |
| Specialty Facilities | 13 | \$19,038,741 | \$4,283,335 | \$23,322,076 |

Source: FY 2003 (through 9/30/03 FY-ends) Annual Survey of Hospitals and Hospital Fiscal Survey, Bureau of Health Information, Division of Health Care Financing, Department of Health and Family Services. FY 2003 (FY-ends after 9/30/03), FY 2004, and FY 2005 Annual Survey of Hospitals and Hospital Fiscal Survey, WHA Information Center, LLC.

A large share of the state's charity care comes from about one-third of all hospitals. Forty-one hospitals each reported \$2 million or more and, combined, provided \$293.3 million in charity care (approximately 87 percent of the charity care provided by all reporting hospitals) in FY 2005 (see Table 3).

The amount of charity care individual hospitals provided ranged from \$0 to \$27.7 million. The wide variation in the amount of charity care that hospitals dispense is due to differences in size, types of services provided, provisions for charity care in their mission statements, and the characteristics of surrounding communities.

Table 3. Wisconsin Hospitals That Reported More than \$2 Million of Charity Care, FY 2005

| Hospital | City | County | Charity Care |
|--|-----------------|-------------|--------------|
| Froedtert Memorial Lutheran Hospital | Milwaukee | Milwaukee | \$27,711,000 |
| St Luke's Medical Center | Milwaukee | Milwaukee | \$24,290,151 |
| University of WI Hospital & Clinics | Madison | Dane | \$17,487,181 |
| St Mary's Hospital – Milwaukee | Milwaukee | Milwaukee | \$15,532,140 |
| Wheaton Franciscan Healthcare – St Joseph, Inc. | Milwaukee | Milwaukee | \$13,967,259 |
| Milwaukee County Mental Health | Wauwatosa | Milwaukee | \$13,902,082 |
| Aurora Sinai Medical Center | Milwaukee | Milwaukee | \$13,178,339 |
| All Saints Healthcare | Milwaukee | Milwaukee | \$10,533,662 |
| Meriter Hospital Inc | Madison | Dane | \$9,757,000 |
| St Vincent Hospital | Green Bay | Brown | \$9,050,521 |
| St Michael Hospital | Milwaukee | Milwaukee | \$8,556,444 |
| Saint Joseph's Hospital | Marshfield | Wood | \$8,200,135 |
| Wheaton Franciscan Healthcare- St Francis, Inc. | Milwaukee | Milwaukee | \$7,714,225 |
| United Hospital System, Inc. | Kenosha | Kenosha | \$7,606,541 |
| Aspirus Wausau Hospital | Wausau | Marathon | \$7,579,322 |
| St Agnes Hospital | Fond du Lac | Fond du Lac | \$7,354,429 |
| Beloit Memorial Hospital, Inc. | Beloit | Rock | \$7,005,859 |
| St Marys Hospital Medical Center | Madison | Dane | \$6,664,461 |
| Luther Hospital | Eau Claire | Eau Claire | \$6,339,398 |
| Mercy Health System Corporation | Janesville | Rock | \$5,427,233 |
| Columbia Hospital, Inc. | Milwaukee | Milwaukee | \$4,713,899 |
| Bellin Memorial Hospital | Green Bay | Brown | \$4,554,675 |
| West Allis Memorial Hospital | West Allis | Milwaukee | \$4,197,112 |
| Saint Michael's Hospital | Stevens Point | Portage | \$3,900,573 |
| North Central Health Care Facilities | Wausau | Marathon | \$3,815,863 |
| BayCare Aurora LLF d/b/a Aurora BayCare Medical Center | Green Bay | Brown | \$3,550,416 |
| Community Memorial Hospital | Menomonee Falls | Waukesha | \$3,290,055 |
| Gundersen Lutheran Medical Center | La Crosse | La Crosse | \$3,285,069 |
| Sacred Heart Hospital | Eau Claire | Eau Claire | \$3,284,192 |
| Theda Clark Medical Center | Neenah | Winnebago | \$3,225,000 |
| Saint Mary's Hospital, Inc. | Rhineland | Oneida | \$3,156,692 |
| Bay Area Medical Center | Marinette | Marinette | \$3,109,201 |
| Aurora Medical Center – Kenosha | Kenosha | Kenosha | \$2,998,711 |
| Holy Family Memorial Medical Center | Manitowoc | Manitowoc | \$2,896,869 |
| The Monroe Clinic | Monroe | Green | \$2,755,350 |
| St Mary's Hospital – Ozaukee | La Crosse | La Crosse | \$2,735,289 |
| Franciscan Skemp Healthcare | La Crosse | La Crosse | \$2,715,583 |

| Hospital | City | County | Charity Care |
|-------------------------------------|-----------|-----------|----------------------|
| Appleton Medical Center | Appleton | Outagamie | \$2,622,200 |
| St Mary's Hospital Medical Center | Green Bay | Brown | \$2,450,930 |
| St Elizabeth Hospital | Appleton | Outagamie | \$2,174,337 |
| Mercy Medical Center of Oshkosh | Oshkosh | Winnebago | \$2,000,705 |
| Total for These 41 Hospitals | | | \$293,289,398 |

Source: FY 2005, Hospital Fiscal Survey, WHA Information Center, LLC

Fifty-three hospitals incurred bad debts greater than \$2 million (see Table 4, page 8). Together, these hospitals incurred \$334.8 million in bad debt, or 84 percent of the \$397.5 million in bad debt incurred by all Wisconsin hospitals in FY 2005.

Individual hospitals reported bad debt ranging from \$-344,000 to \$27.6 million. This range may reflect differences in how aggressively hospitals pursued payment, as well as socioeconomic conditions in each hospital's service area. Bad debt can be negative if a hospital collects on debts that carried over from previous fiscal years.

Sixty-eight hospitals, generally urban facilities, each had more than \$2 million of total uncompensated health care. These hospitals provided \$679.3 million, or 92 percent, of the \$736.2 million in uncompensated health care incurred by all Wisconsin hospitals in FY 2005.

UNCOMPENSATED HEALTH CARE AS A PERCENTAGE OF PATIENT REVENUE

Another way to measure how much uncompensated health care a hospital provides is to express it as a percentage of a hospital's total gross patient revenue (charges), rather than as a dollar amount. This allows better comparisons between hospitals of different sizes.

The portion of total gross patient revenue that Wisconsin hospitals provided as uncompensated health care in 2005 varied greatly, from 0 percent to 22.9 percent. The average for all reporting hospitals was 3.3 percent, up from 3.0 percent in FY 2004. In FY 2005, GMS hospitals averaged 3.2 percent up, from 3.0 percent in FY 2004, and specialty facilities averaged 4.2 percent, down from 6.9 percent in FY 2004.

The three hospitals providing the most uncompensated health care as a percentage of gross patient revenue were:

- North Central Health Care Facilities, Wausau, 22.9 percent
- Milwaukee County Behavioral Health Division, Wauwatosa, 12.8 percent
- St. Mary's Hospital, Superior, 9.0 percent

The seven hospitals providing the least uncompensated health care as a percentage of gross patient revenue were:

- Select Specialty Hospital, West Allis, -1.3%
- Lakeview NeuroRehab Center, Waterford, -0.6 percent
- Select Specialty Hospital, Milwaukee, -0.4 percent
- Brown County Mental Health Center, Green Bay, 0.0 percent
- Oakleaf Surgical Hospital, Eau Claire, 0.0 percent
- Waukesha County Mental Health Center, Waukesha, 0.0 percent
- Kindred Hospital, Greenfield, 0.0 percent

Charity care for all reporting hospitals averaged 1.3 percent of gross patient revenue, ranging from 0.0 to 22.5 percent. The average was 1.1 percent for GMS hospitals and 3.0 percent for specialty facilities. Bad debt averaged 2.0 percent of gross patient revenue, ranging from -1.3 percent to 6.2 percent. The average was 2.1 percent for GMS hospitals and 1.2 percent for specialty facilities (see Figure 1).

Table 4. Wisconsin Hospitals that Reported More than \$2 Million of Bad Debt, FY 2005

| Hospital | City | County | Bad Debt |
|--|---------------|---------------|-----------------|
| Froedtert Memorial Lutheran Hospital | Milwaukee | Milwaukee | \$27,550,000 |
| St Luke's Medical Center | Milwaukee | Milwaukee | \$27,270,920 |
| All Saints Healthcare | Racine | Racine | \$26,933,306 |
| University of WI Hospital & Clinics | Madison | Dane | \$17,924,717 |
| Wheaton Franciscan Healthcare, St Joseph, Inc. | Milwaukee | Milwaukee | \$11,678,432 |
| Waukesha Memorial Hospital | Waukesha | Waukesha | \$11,646,474 |
| St Michael Hospital | Milwaukee | Milwaukee | \$11,052,778 |
| St Mary's Hospital- Milwaukee | Milwaukee | Milwaukee | \$10,754,827 |
| Gundersen Lutheran Medical Center | La Crosse | La Crosse | \$10,218,590 |
| Wheaton Franciscan Healthcare, St Francis, Inc. | Milwaukee | Milwaukee | \$9,575,985 |
| St Mary's Hospital Medical Center | Madison | Dane | \$8,793,302 |
| United Hospital System, Inc. | Kenosha | Kenosha | \$7,995,991 |
| Mercy Health System Corporation | Janesville | Rock | \$7,382,973 |
| BayCare Aurora LLD d/b/a Aurora BayCare Med Center | Green Bay | Brown | \$6,999,608 |
| Meriter Hospital, Inc. | Madison | Dane | \$6,984,693 |
| St Vincent Hospital | Green Bay | Brown | \$6,115,790 |
| West Allis Memorial Hospital | West Allis | Milwaukee | \$5,241,118 |
| Theda Clark Medical Center | Neenah | Winnebago | \$5,108,000 |
| Aurora Medical Center- Kenosha | Kenosha | Kenosha | \$4,990,500 |
| St Elizabeth Hospital | Appleton | Outagamie | \$4,930,802 |
| Luther Hospital | Eau Claire | Eau Claire | \$4,720,947 |
| Franciscan Skemp Healthcare | La Crosse | La Crosse | \$4,506,228 |
| Columbia Hospital, Inc. | Milwaukee | Milwaukee | \$4,332,557 |
| Aurora Sinai Medical Center | Milwaukee | Milwaukee | \$4,310,000 |
| Sacred Heart Hospital | Eau Claire | Eau Claire | \$4,293,061 |
| Appleton Medical Center | Appleton | Outagamie | \$4,289,400 |
| Beloit Memorial Hospital, Inc | Beloit | Rock | \$4,273,583 |
| Saint Joseph's Hospital | Marshfield | Wood | \$4,228,351 |
| Bellin Memorial Hospital | Green Bay | Brown | \$4,207,622 |
| St Agnes Hospital | Fond du Lac | Fond du Lac | \$4,135,690 |
| Holy Family Memorial Medical Center | Manitowoc | Manitowoc | \$3,843,646 |
| Bay Area Medical Center | Marinette | Marinette | \$3,810,649 |
| Oconomowoc Memorial Hospital | Oconomowoc | Waukesha | \$3,731,308 |
| Sheboygan Memorial/Valley View Hospital | Sheboygan | Sheboygan | \$3,500,785 |
| St Clare Hospital and Health System | Baraboo | Sauk | \$3,457,190 |
| Aspirus Wausau Hospital | Wausau | Marathon | \$3,335,735 |
| Saint Michael's Hospital | Stevens Point | Portage | \$3,233,637 |
| St Mary's Hospital – Ozaukee | Mequon | Ozaukee | \$2,992,246 |
| Saint Mary's Hospital, Inc. | Rhineland | Oneida | \$2,989,086 |
| Aurora Lakeland Medical Center | Elkhorn | Walworth | \$2,626,000 |
| St Mary's Hospital Medical Center | Green Bay | Brown | \$2,530,652 |
| Aurora Medical Center of Oshkosh | Oshkosh | Winnebago | \$2,494,476 |
| Fort HealthCare | Fort Atkinson | Jefferson | \$2,453,850 |
| Mile Bluff Medical Center | Mauston | Juneau | \$2,313,742 |
| St Joseph's Community Hospital | West Bend | Washington | \$2,225,256 |

| Hospital | City | County | Bad Debt |
|-------------------------------------|------------|-----------|----------------------|
| Beaver Dam Community Hospital | Beaver Dam | Dodge | \$2,219,921 |
| Langlade Memorial Hospital | Antigo | Langlade | \$2,165,148 |
| Elmbrook Memorial Hospital | Brookfield | Waukesha | \$2,125,708 |
| Divine Savior Healthcare Inc. | Portage | Columbia | \$2,105,500 |
| Watertown Memorial Hospital | Watertown | Dodge | \$2,075,166 |
| Memorial Hospital of Burlington | Burlington | Racine | \$2,033,600 |
| St Nicholas Hospital | Sheboygan | Sheboygan | \$2,022,956 |
| Mercy Medical Center of Oshkosh | Oshkosh | Winnebago | \$2,020,105 |
| Total for These 53 Hospitals | | | \$334,752,607 |

Source: FY 2005 Hospital Fiscal Survey, WHA Information Center, LLC

The three hospitals with the most charity care as a percentage of gross patient revenue were:

- North Central Health Care Facilities, Wausau, 22.5 percent
- Milwaukee County Behavioral Health Division, Wauwatosa, 12.5 percent
- Beloit Memorial Hospital, Beloit, 4.0 percent

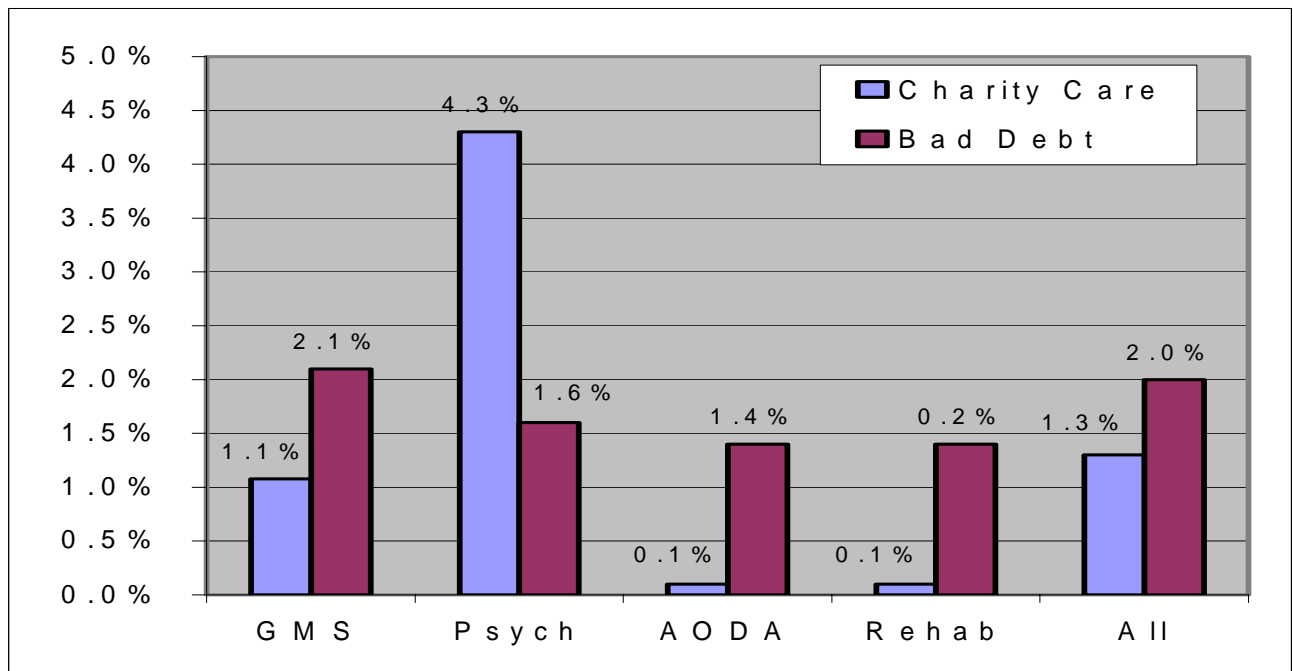
The five hospitals with the most bad debt as a percentage of gross patient revenue were:

- St Mary's Hospital of Superior, Superior, 6.2 percent
- Wheaton Franciscan Healthcare - All Saints, Inc., Racine, 5.5 percent
- Good Samaritan Health Center, Merrill, 5.1 percent
- St Michael Hospital, Milwaukee, 4.4 percent
- Tomah Memorial Hospital, Inc., Tomah, 4.4 percent
- St Clare Hospital and Health System, Baraboo, 3.9 percent

Appendix 1 lists each hospital's charity care, bad debt, and total uncompensated health care charges as dollar amounts and as percentages of total gross patient revenue.

Figure 1. Charity Care and Bad Debt as a Percentage of Total Gross Patient Revenue, by Hospital Type, Wisconsin Hospitals, FY 2005

Source: FY 2005 Hospital Fiscal Survey, WHA Information Center, LLC



UNCOMPENSATED HEALTH CARE AS A PERCENTAGE OF NON-GOVERNMENT PATIENT REVENUE

Another way to measure how much uncompensated health care a hospital provides is to express it as a percentage of total gross non-government patient revenue.

Measured this way, hospitals' FY 2005 total uncompensated health care ranged from -11.0 percent to 138.8 percent*. The average for all Wisconsin hospitals was 8.2 percent, up from 6.5 percent in FY 2004. GMS hospitals averaged 7.2 percent, up from 6.3 percent in FY 2004, while specialty facilities averaged 19 percent, up from 17.3 percent in FY 2004.

The average charity care for all reporting hospitals was 3.7 percent of non-government patient revenue. GMS hospitals averaged 2.6 percent and specialty facilities averaged 15.3 percent. The average bad debt for all reporting hospitals was 4.5 percent of non-government patient revenue. GMS hospitals averaged 4.6 percent and specialty facilities averaged 3.7 percent (see figure 2).

The six hospitals providing 10 percent or more of bad debt as a percentage of non-government patient revenue were:

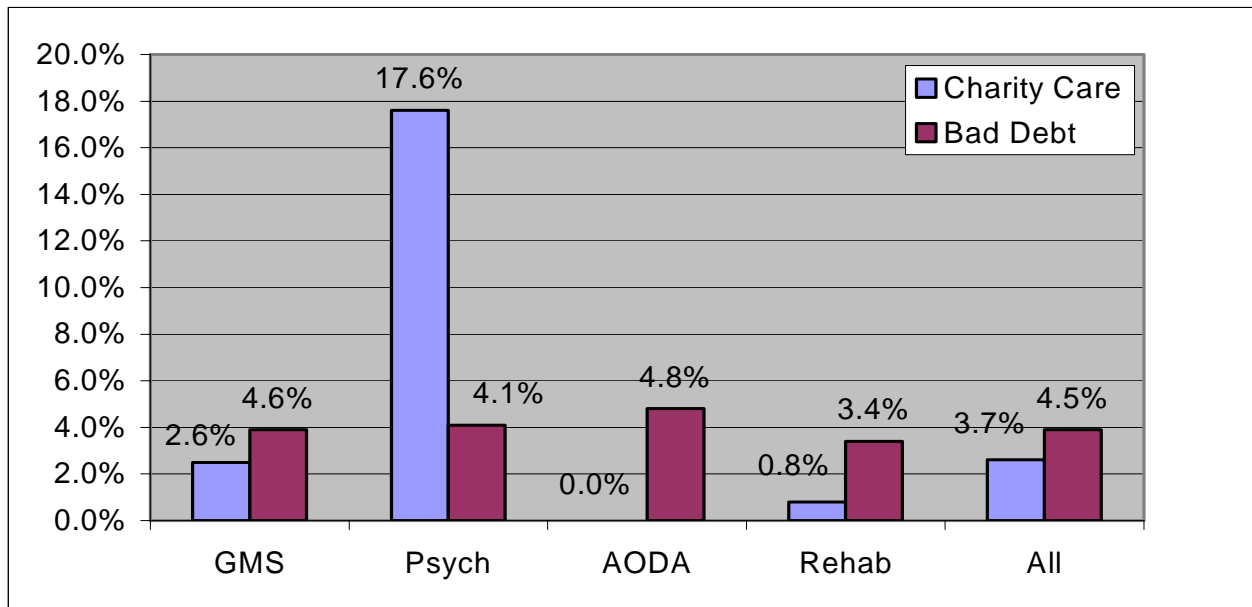
- St. Mary's Hospital of Superior, Superior, 15.5 percent
- All Saints Healthcare, Racine, 12.2 percent
- St Michael Hospital, Milwaukee, 11.9 percent
- Osseo Medical Center, Osseo, 10.6 percent
- Good Samaritan Health Center, Merrill, 10.3 percent
- Spooner Health System, Spooner, 10.2 percent

Appendix 2 lists each hospital's charity care, bad debt, and total uncompensated health care charges as dollar amounts and as percentages of its total gross non-government patient revenue.

Whether measured against total gross patient revenue or total gross non-government patient revenue, the psychiatric hospitals had the highest overall percentage of uncompensated health care compared to GMS, AODA, and rehabilitation facilities (see figure 3). Rehabilitation facilities provided the least uncompensated health care as both a percentage of total gross patient revenue and as a percentage of total gross non-government patient revenue.

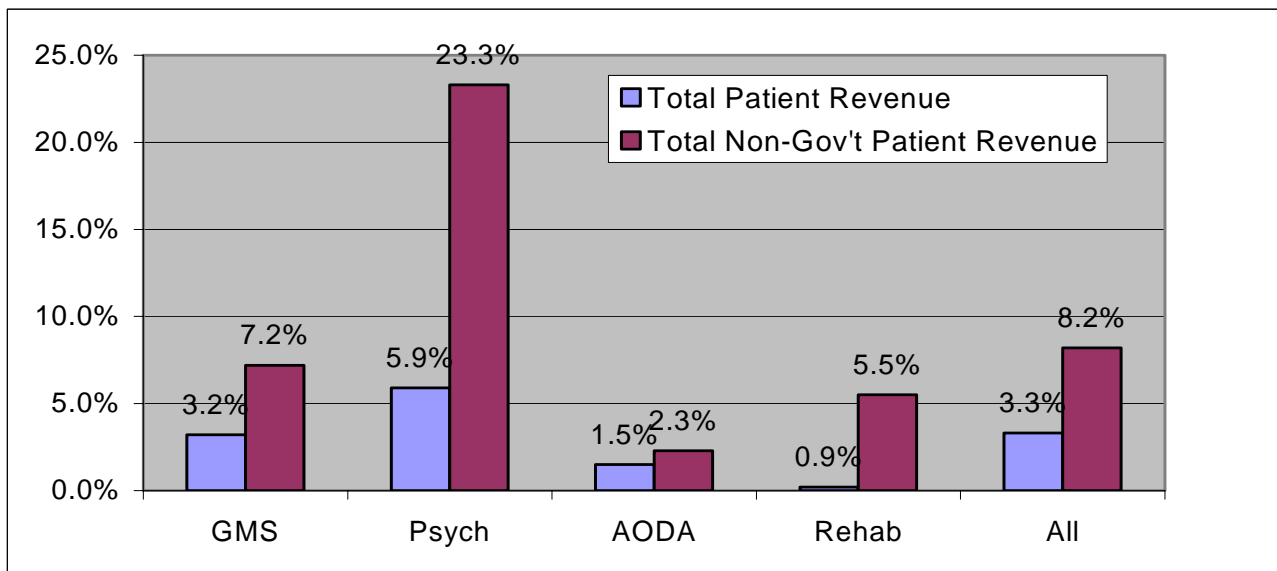
* A specialty Hospital, North Central Health Care Facilities, Wausau, is the only facility to exceed 100 percent uncompensated care as a percentage of total gross non-government patient revenue.

Figure 2. Charity Care and Bad Debt as a Percentage of Total Gross Non-Government Patient Revenue, by Hospital Type, Wisconsin Hospitals, FY 2005



Source: FY 2005 Hospital Fiscal Survey, WHA Information Center, LLC

Figure 3. Total Uncompensated Health Care as a Percentage of Total Gross Patient Revenue and Total Gross Non-Government Patient Revenue, by Hospital type, Wisconsin Hospitals, FY 2005



Source: FY 2005 Hospital Fiscal Survey, WHA Information Center, LLC

UNCOMPENSATED HEALTH CARE PROJECTIONS FOR FISCAL YEAR 2006

Hospitals submitted anticipated total charges for uncompensated health care for the next fiscal year (FY 2006). Overall, hospitals projected that uncompensated health care would increase by 8.9 percent, or \$65.5 million, for FY 2006 (see Table 5). GMS facilities projected an increase of 9.3 percent, or \$66.6 million; specialty facilities projected a decrease of 4.5 percent, or \$1.1 million.

Most hospitals projected increases in both charity care and bad debt for FY 2006, citing the following causes; price increases, increased deductibles in patients' insurance, and economic conditions.

Hospitals expected the amount of charity care to increase 8.4 percent, or \$28.6 million, in FY 2006, while bad debt was expected to increase 9.3 percent, or \$36.9 million (see Table 6).

Table 5. Summary Data of Actual and Projected Charges for Uncompensated Health Care, Wisconsin Hospitals, FY 2005 and 2006

| | Number of Hospitals | Actual FY 2005 Uncompensated Care Charges | Projected FY 2006 Uncompensated Care Charges |
|-----------------------------|---------------------|---|--|
| All Hospitals | 143 | \$736,158,539 | \$801,678,999 |
| GMS Hospitals | 130 | \$712,836,463 | \$779,411,437 |
| Specialty Facilities | 13 | \$23,322,076 | \$22,267,562 |

Source: FY 2005 Hospital Fiscal Survey, WHA Information Center, LLC

Table 6. Actual and Projected Charges for Bad Debt and Charity Care, Wisconsin Hospitals, FY 2005 and 2006

| | Number of Hospitals | Actual FY 2005 Charity Care | Projected FY 2006 Charity Care | Actual FY 2005 Bad Debt | Projected FY 2006 Bad Debt |
|-----------------------------|---------------------|-----------------------------|--------------------------------|-------------------------|----------------------------|
| All Hospitals | 143 | \$338,618,925 | \$367,193,817 | \$397,539,614 | \$434,485,182 |
| GMS Hospitals | 130 | \$319,580,184 | \$349,259,626 | \$393,256,279 | \$430,151,811 |
| Specialty Facilities | 13 | \$19,038,741 | \$17,934,191 | \$4,283,335 | \$4,333,371 |

Source: FY 2005 Hospital Fiscal Survey, WHA Information Center, LLC

Hospitals also reported the number of patients who received uncompensated health care services in FY 2005, as well as the number of patients projected to receive uncompensated health care in FY 2006. Hospitals must report using *individual patient visit ledgers*. A new ledger is created for each individual patient registration/visit. One patient visit ledger can apply to each of the following:

1. An entire inpatient stay;
2. All services rendered to an outpatient on a calendar day;
3. An ambulance run pertaining to the transfer of a Medicare inpatient to another facility, or the transport of a Medicare patient to the reporting facility for urgent, emergent or inpatient services;
4. Monthly durable medical equipment rentals; or
5. An entire swing-bed stay.

In FY 2005, Wisconsin hospitals reported providing uncompensated health care services to 965,081 patients (see Table 7), up from 884,126 patients in FY 2004. Hospitals projected a 7.3-percent increase, to 1,035,879 patients, for FY 2006.

Refer to Appendix 3 for a complete listing of each hospital's actual FY 2005 and projected FY 2006 patient figures.

Table 7. Summary Data of Actual and Projected Number of Patients Receiving Uncompensated Health Care, Wisconsin Hospitals, FY 2005 and 2006

| | Number of Hospitals | Actual FY 2005 Number of Patients | Projected FY 2006 Number of Patients |
|----------------------|---------------------|-----------------------------------|--------------------------------------|
| All Hospitals | 143 | 965,081 | 1,035,879 |
| GMS Hospitals | 130 | 943,242 | 1,028,124 |
| Specialty Facilities | 13 | 21,839 | 7,755 |

Source: FY 2005 Hospital Fiscal Survey, WHA Information Center, LLC.

BASIS FOR PROJECTIONS

Along with their FY 2006 projections for uncompensated health care charges and patients, hospitals supplied the rationale they used to make their projections. Most hospitals stated that their projections were based upon an analysis performed during their FY 2006 budget process. These analyses usually took into account the following factors:

- A hospital's historical fiscal year and its most recent year-to-date total number of patients and patient charges;
- Planned price changes;
- Projected volume changes;
- Known usage factors (including the area's economy and demographics);
- Required Hill-Burton program compliance levels;
- Hospital budget constraints; and
- A hospital's mission statement to support the community.

UNCOMPENSATED HEALTH CARE AT COST*

As an alternative to measuring uncompensated health care by charges, the value can be expressed in terms of a hospital's cost to deliver care, using the hospital's cost-to-charge ratio applied to charges (Appendix 5).

Measured this way, hospitals' FY 2005 total uncompensated care at cost ranged from -1.2 percent to 32.6 percent of cost, averaging 3.2 percent at all reporting hospitals. Total charity care at cost averaged 1.3 percent, or \$171.5 million, and bad debt at cost averaged 1.8 percent, or \$196.5 million (Table 8).

Table 8. Summary Data of Uncompensated Health Care at Cost*

| | Number of Hospitals | Charity Care at Cost | Bad Debt at Cost | Total Uncomp. Health Care at Cost |
|-----------------------------|--------------------------------|---------------------------------|-----------------------------|--|
| FY 2005 | | | | |
| All Hospitals | 143 | \$171,457,110 | \$196,496,004 | \$367,953,114 |
| GMS Hospitals | 130 | \$156,313,287 | \$194,284,994 | \$350,598,281 |
| Specialty Facilities | 13 | \$15,143,823 | \$2,211,010 | \$17,354,833 |

*estimate based on the hospitals' cost- to-charge ratio

VERIFYING NEED FOR CHARITY CARE

Most hospitals stated in their uncompensated health care plans that part of their mission was to serve the poor and underserved. These hospitals usually restricted their uncompensated health care programs to individuals unable to access programs such as Medical Assistance or General Relief, those unable to pay for medical obligations, or those with limited financial resources. Often, hospitals' plans included an economic and statistical profile of the individuals in their service area who would be eligible for uncompensated health care services.

These individuals can include the recently unemployed; those employed but without employer-provided health insurance; those whose health insurance requires significant deductibles or co-payments; single parents; those recently or currently experiencing a divorce; transients or those without a permanent address; students, as well as their spouses and dependents; retirees not yet eligible for Medicare; and elderly people with limited or no Medicare supplemental insurance coverage.

Nearly every hospital had a procedure to determine and verify the income information supplied by people applying for uncompensated health care services. Hospitals acknowledged that, during both the initial and the final determination, the hospital policy would be consistently and equitably applied and that no patient would be denied uncompensated health care based upon race, creed, color, sex, national origin, sexual orientation, disability, age, or source of income.

The following is a summary of the steps that hospitals generally use to determine eligibility or verify applicant information:

1. Hospital identifies any uninsured, underinsured, or self-pay patients.
2. Patient completes application/determination of eligibility form.
3. Patient completes financial statement that includes income, assets, and liabilities. Patient supplies documentation of resources (e.g., W-2 pay stubs, tax forms) and outstanding obligations (e.g., bank statements, loan documents).
4. Hospital considers federal poverty guidelines and family size.
5. Hospital verifies third-party coverage, if indicated.
6. Designated hospital staff person interviews patient to assess if the patient: has the ability to pay in full, has the ability to pay reasonable monthly installments, or qualifies for General Relief (based on state statutes).
7. Hospital attempts to secure federal, state, or local funding, if appropriate.
8. After the hospital makes an initial determination of insufficient funds, income, and health care benefits, the claim becomes eligible for final review, often by a committee comprised of administrative, business office, social services, and nursing staff. Occasionally, hospital board members serve on these committees.

NOTIFYING THE PUBLIC REGARDING CHARITY CARE AVAILABILITY

Most hospitals reported having procedures to inform the public about the availability of charity care at their facilities (see table 9c). In general, hospitals provide information and applications for charity care at the time of registration, in their emergency rooms and in their fiscal services office. These applications may also be included in a patient's admission packet or with itemized bills that are mailed to a patient after discharge from the hospital.

Many hospitals publish brochures or pamphlets describing the availability of charity care and identifying the criteria for qualification. Some hospitals offer individual counseling at the time of pre-admission or during the collection process. Signs may be posted in English and other languages, explaining available charity care services. These are usually located in the admitting and emergency entrance areas of the hospital. Hospitals also publish annual notices in local or area newspapers describing charity care programs.

Most public information procedures used by hospitals also fulfill requirements of the Hill-Burton program (see page 19). Many hospitals no longer subject to Hill-Burton requirements still follow the procedures established under that program to notify the public about charity care available.

Table 9a, 9b, and 9c summarize uncompensated health care in 3 sections: Eligibility for financial aid, collection policies, and procedure for informing the public.

Table 9a. Eligibility for Financial Assistance

| FY 2005 | % of reporting facilities |
|--|----------------------------------|
| Written policies to determine patients' ability to pay and eligibility for financial aid | 95% |
| Hospital requires applicants to complete a form to determine eligibility | 95% |
| Hospital determines eligibility on the basis of the patient's income | 95% |
| Hospital considers assets in determining eligibility for financial aid | 84% |
| Hospital's review includes a determination of eligibility for other government programs | 100% |
| | |

Table 9b. Collection Practices

| FY 2005 | % of reporting facilities |
|---|----------------------------------|
| Written policies about when and under whose authority patient debit is advanced for collection | 97% |
| Hospital reviews patient's record to determine if reasonable efforts were undertaken to determine if financial assistance should have been offered before assigning the case to a collection agency | 86% |
| Hospital obtains written agreements from collection agencies that it will adhere to hospital-defined standards | 81% |
| | |

Table 9c. Procedure for Informing Public

| FY 2005 | % of reporting facilities |
|---|----------------------------------|
| Hospital has procedures to inform the public about the availability of financial aid/charity care | 93% |
| Hospital provides training to personnel who interact with patients about financial assistance | 95% |
| Hospital provides translation services as needed | 100% |
| | |

HILL-BURTON PROGRAM

Between 1946 and 1974, a number of Wisconsin hospitals participated in the Hill-Burton program, which provided federal funds to assist in the construction or renovation of public or non-profit hospital facilities. In return for funding, the hospitals agreed to provide a reasonable amount of care without charge or at reduced rates to patients who could not afford health care.

According to their uncompensated health care plans, six hospitals still had Hill-Burton obligations at the close of their 2005 fiscal year. Table 10 contains a list of these hospitals.

Table 10. Wisconsin Hospitals with Outstanding Hill-Burton Obligations, FY 2005

Memorial Community Hospital, Edgerton
Moundview Memorial Hospital & Clinics, Inc., Friendship
Divine Savior Healthcare, Portage
Spooner Health System, Spooner
Milwaukee County Behavioral Health Division, Wauwatosa
Tri-County Memorial Hospital, Inc., Whitehall

Source: FY 2005 Hospital Fiscal Survey, WHA Information Center, LLC

Hospitals with Hill-Burton obligations must follow federal procedures to determine patient eligibility. Hospitals determine eligibility by comparing the patient's family income to the current federal poverty guidelines. The federal government defines family income as total income from all sources before taxes or deductions.

Hospitals with Hill-Burton obligations must publish a notice of the availability of uncompensated health care at their facility 60 days before the beginning of each fiscal year. Facilities must also post signs publicizing their uncompensated health care programs. It is also the hospitals' responsibility to update and make available to the public individual notices of the availability of uncompensated health care.

These notices are generally distributed to each patient upon admission. A patient applying for uncompensated health care can usually obtain an application at the hospital's business office. The patient then submits the application to a designated hospital staff person who will determine eligibility. The hospital must determine eligibility either within two working days following a pre-service request, or by the end of the first full billing cycle following a post-service request. The hospital must then verify the applicant's income and ineligibility to receive third-party assistance before a final determination can be made.

A hospital cannot bill an applicant who qualifies for the Hill-Burton uncompensated health care program. Instead, approved Hill-Burton bills are submitted to the appropriate hospital fiscal staff person for write-off. Each year a hospital's uncompensated health care allocation is used on a first-come, first-served basis. Every hospital participating in the program keeps a Hill-Burton log containing the names of patients served, dates of service, and the amount applied to the program for each fiscal year.

When a hospital has met its "fiscal obligation" under this program, the federal government still requires the hospital to fulfill its "community services obligation." This obligation does not have a time limit and remains in effect as long as the present facility exists. In general, this community service obligation prevents a participating hospital from discriminating in the provision of services to patients.

GLOSSARY

Abbreviations:

| | |
|-------|-----------------------------------|
| AODA | Alcohol and other drug abuse |
| BHI | Bureau of Health Care Information |
| FY | Fiscal year |
| GMS | General medical-surgical |
| PSYCH | Psychiatric |
| REHAB | Rehabilitation |
| WHAIC | WHA Information |

Definitions:

Bad debt – claims based arising from rendering patient care services (at normal billed charges) that the hospital, using a sound credit and collection policy, determines are not collectible, but does not include charity care [s. HFS 120.03(2), Wis. Adm. Code].

Bad debt at Cost – an estimate of the actual bad debt services a hospital provides. Based on the hospital's Cost-to-Charge Ratio.

Charity care – health care a hospital provides to a patient who, after an investigation of the circumstances surrounding the patient's ability to pay, including nonqualification for a public program, is determined by the hospital to be unable to pay all or a portion of the hospital's normal billed charges. Charity care does not include any of the following:

1. Care provided to patients for which a public program or public or private grant funds pay for any of the charges for the care;
2. Contractual adjustments in the provision of health care services below normal billed charges;
3. Differences between a hospital's charges and payments received for health care services provided to the hospitals' employees, to public employees or to prisoners;
4. Hospital charges associated with health care services for which a hospital reduces normal billed charges as a courtesy; or
5. Bad debts [s. HFS 120.03(4), Wis. Adm. Code].

Charity Care at Cost – an estimate of the actual cost of charity care a hospital provides. Based on the hospital's Cost-to-Charge Ratio.

Cost-to-Charge Ratio (CCR) –

$$\text{CCR} = (\text{Total Expenses} - \text{Bad Debt}) \text{ divided by } (\text{Total Gross Patient Revenue} + \text{Other Operating Revenue}).$$

General medical-surgical (GMS) hospital – a hospital that provides diagnostic and therapeutic services to patients for a variety of medical conditions, both surgical and nonsurgical, where the average length of stay for 50 percent or more of the patients is less than 30 days.

Gross patient revenue – the total charges generated by hospitals to patients for services provided.

Individual patient visit ledger – a ledger created for each individual patient registration/visit. One patient visit ledger could apply to each of the following:

1. An entire inpatient stay;
2. All services rendered to an outpatient on a calendar day;
3. An ambulance run pertaining to the transfer of a Medical inpatient to another facility, or the transport of a Medicare patient to a facility for urgent, emergent or inpatient services;
4. Monthly durable medical equipment rentals; or
5. An entire swing-bed stay.

Other operating revenue- consists of revenue from services other than health care provided to patients, as well as sales and services to nonpatients (e.g., investments, cafeteria or gift shop sales). This includes tax appropriations.

Uncompensated health care services – charity care and bad debts combined [s. HFS 120.03(35), Wis. Adm. Code].

Uncompensated health care services at cost - actual uncompensated health care services provided by a hospital at cost. Based on the hospital's Cost-to-Charge Ratio.

APPENDIX 1:

Charity Care, Bad Debt, and Total Uncompensated Health Care as a Percentage of
Total Gross Patient Revenue

FY 2005

| Name | City | Type | County | Charity Care | % Total Patient Revenue | Bad Debt | % Total Patient Revenue | Total Uncompensated Health Care | % Total Patient Revenue |
|--|-------------------|------------|-------------|----------------------|-------------------------|----------------------|-------------------------|---------------------------------|-------------------------|
| Total Wisconsin Hospitals | All | All | All | \$338,618,925 | 1.3% | \$397,539,614 | 2.0% | \$736,158,539 | 3.3% |
| Amery Regional Medical Center | Amery | GMS | Polk | \$281,124 | 0.7% | \$992,276 | 2.6% | \$1,273,400 | 3.3% |
| Langlade Memorial Hospital | Antigo | GMS | Langlade | \$646,489 | 0.9% | \$2,165,148 | 3.2% | \$2,811,637 | 4.1% |
| Appleton Medical Center | Appleton | GMS | Outagamie | \$2,622,200 | 1.0% | \$4,289,400 | 1.6% | \$6,911,600 | 2.6% |
| St Elizabeth Hospital | Appleton | GMS | Outagamie | \$2,174,337 | 1.1% | \$4,930,802 | 2.5% | \$7,105,139 | 3.6% |
| Franciscan Skemp Healthcare - Arcadia | Arcadia | GMS | Trempealeau | \$69,340 | 0.9% | \$202,120 | 2.6% | \$271,460 | 3.5% |
| Memorial Medical Center | Ashland | GMS | Ashland | \$558,854 | 0.8% | \$1,889,084 | 2.6% | \$2,447,938 | 3.4% |
| Baldwin Area Medical Center, Inc. | Baldwin | GMS | St. Croix | \$171,699 | 0.5% | \$1,342,916 | 3.7% | \$1,514,615 | 4.2% |
| St Clare Hospital & Health Services | Baraboo | GMS | Sauk | \$934,807 | 1.1% | \$3,457,190 | 3.9% | \$4,391,277 | 5.0% |
| Barron Memorial Medical Center Inc | Barron | GMS | Barron | \$114,861 | 0.5% | \$584,266 | 2.7% | \$699,127 | 3.2% |
| Beaver Dam Community Hospitals, Inc. | Beaver Dam | GMS | Dodge | \$239,772 | 0.3% | \$2,219,921 | 2.5% | \$2,459,693 | 2.8% |
| Beloit Memorial Hospital Inc | Beloit | GMS | Rock | \$7,005,859 | 4.0% | \$4,273,583 | 2.4% | \$11,279,442 | 6.4% |
| Berlin Memorial Hospital | Berlin | GMS | Green Lake | \$1,373,852 | 1.9% | \$1,400,878 | 1.9% | \$2,774,730 | 3.8% |
| Black River Memorial Hospital | Black River Falls | GMS | Jackson | \$212,653 | 0.8% | \$1,712,184 | 4.3% | \$1,384,837 | 5.1% |
| Bloomer Medical Center - Mayo Health Systems | Bloomer | GMS | Chippewa | \$51,716 | 0.4% | \$280,000 | 2.3% | \$331,716 | 2.7% |
| Boscobel Area Health Care | Boscobel | GMS | Grant | \$21,882 | 0.1% | \$387,947 | 1.9% | \$409,829 | 2.0% |
| Wheaton Franciscan Healthcare- Elmbrook Memorial, Inc. | Brookfield | GMS | Waukesha | \$1,200,867 | 0.4% | \$2,125,708 | 0.7% | \$3,326,575 | 1.1% |
| Memorial Hospital of Burlington | Burlington | GMS | Racine | \$1,612,388 | 1.4% | \$2,033,600 | 1.8% | \$3,645,988 | 3.2% |
| Calumet Medical Center, Inc. | Chilton | GMS | Calumet | \$185,720 | 0.9% | \$345,512 | 1.8% | \$531,232 | 2.7% |
| St Joseph's Hospital | Chippewa Falls | GMS | Chippewa | \$1,787,824 | 2.1% | \$1,365,000 | 1.6% | \$3,152,824 | 3.7% |
| Columbus Community Hospital | Columbus | GMS | Columbia | \$173,577 | 0.5% | \$606,831 | 1.9% | \$780,408 | 2.4% |
| Cumberland Memorial Hospital, Inc. | Cumberland | GMS | Barron | \$163,988 | 0.7% | \$413,741 | 1.8% | \$577,739 | 2.5% |
| Memorial Hospital of Lafayette County | Darlington | GMS | Lafayette | \$10,679 | 0.1% | \$125,511 | 1.0% | \$136,190 | 1.1% |
| Upland Hills Health, Inc. | Dodgeville | GMS | Iowa | \$620,750 | 1.5% | \$652,500 | 1.6% | \$1,273,250 | 3.1% |
| Chippewa Valley Hospital | Durand | GMS | Pepin | \$29,820 | 0.2% | \$186,265 | 1.4% | \$216,087 | 1.6% |
| Eagle River Memorial Hospital | Eagle River | GMS | Vilas | \$153,601 | 0.6% | \$430,087 | 1.7% | \$583,688 | 2.4% |
| Luther Hospital | Eau Claire | GMS | Eau Claire | \$6,339,398 | 2.1% | \$4,720,947 | 1.6% | \$11,060,345 | 3.7% |
| Oakleaf Surgical Hospital | Eau Claire | GMS | Eau Claire | \$0 | 0.0% | \$0 | 0.0% | \$0 | 0.0% |
| Sacred Heart Hospital | Eau Claire | GMS | Eau Claire | \$3,284,192 | 1.3% | \$4,293,061 | 1.7% | \$7,577,253 | 3.0% |
| Memorial Community Hospital | Edgerton | GMS | Rock | \$157,975 | 0.7% | \$645,999 | 2.7% | \$803,974 | 3.4% |
| Aurora Lakeland Medical Center | Elkhorn | GMS | Walworth | \$1,840,190 | 1.4% | \$2,626,000 | 2.0% | \$4,466,190 | 3.4% |
| Agnesian HealthCare/St Agnes Hospital | Fond du Lac | GMS | Fond du Lac | \$7,354,429 | 2.2% | \$4,135,690 | 1.2% | \$11,490,119 | 3.4% |
| Fond du Lac County Health Care Center | Fond du Lac | PSYCH | Fond du Lac | \$0 | 0.0% | \$119,328 | 3.6% | \$119,328 | 3.6% |
| Fort HealthCare | Fort Atkinson | GMS | Jefferson | \$943,217 | 0.9% | \$2,453,850 | 1.8% | \$3,397,067 | 2.7% |
| Moundview Memorial Hospital & Clinics, Inc | Friendship | GMS | Adams | \$374,274 | 1.8% | \$589,268 | 2.8% | \$963,542 | 4.6% |
| Orthopaedic Hospital of Wisconsin - Glendale | Glendale | GMS | Milwaukee | \$125,634 | 0.3% | \$661,841 | 1.6% | \$787,475 | 1.9% |
| Burnett Medical Center | Grantsburg | GMS | Burnett | \$340,634 | 2.0% | \$558,449 | 3.2% | \$899,083 | 5.2% |

| Name | City | Type | County | Charity Care | % Total Patient Revenue | Bad Debt | % Total Patient Revenue | Total Uncompensated Health Care | % Total Patient Revenue |
|---|-----------------|------------|------------|----------------------|-------------------------|----------------------|-------------------------|---------------------------------|-------------------------|
| Total Wisconsin Hospitals | All | All | All | \$338,618,925 | 1.3% | \$397,539,614 | 2.0% | \$736,158,539 | 3.3% |
| BayCare Aurora LLC d/b/a Aurora BayCare Med Ctr | Green Bay | GMS | Brown | \$3,550,416 | 1.2% | \$6,999,608 | 2.4% | \$10,550,024 | 3.6% |
| Bellin Memorial Hospital | Green Bay | GMS | Brown | \$4,554,675 | 1.3% | \$4,207,622 | 1.2% | \$8,762,297 | 2.5% |
| Bellin Psychiatric Center | Green Bay | PSYCH | Brown | \$211,619 | 0.9% | \$420,689 | 1.8% | \$632,308 | 2.7% |
| Brown County Mental Health Center | Green Bay | PSYCH | Brown | \$0 | 0% | \$0 | 0% | \$0 | 0% |
| Libertas Treatment Center | Green Bay | AODA | Brown | \$3,222 | 0.1% | \$38,164 | 1.4% | \$41,386 | 1.5% |
| St. Mary's Hospital Medical Center | Green Bay | GMS | Brown | \$2,450,930 | 1.7% | 2,530,652 | 1.7% | \$4,981,582 | 3.4% |
| St. Vincent Hospital | Green Bay | GMS | Brown | \$9,050,521 | 2.7% | \$6,115,790 | 1.8% | \$15,166,311 | 4.5% |
| Kindred Hospital - Milwaukee | Greenfield | GMS | Milwaukee | \$0 | 0.0% | \$0 | 0.0% | \$0 | 0.0% |
| Aurora Medical Center of Washington County Inc | Hartford | GMS | Washington | \$799,505 | 0.9% | \$1,334,437 | 1.5% | \$2,133,942 | 2.4% |
| Hayward Area Memorial Hospital | Hayward | GMS | Sawyer | \$177,999 | 0.5% | \$1,108,189 | 3.2% | 1,286,188 | 3.7% |
| St. Joseph's Comm. Health Services, Inc. | Hillsboro | GMS | Vernon | \$2,627 | 0.0% | \$434,506 | 2.1% | \$437,133 | 2.1% |
| Hudson Hospital | Hudson | GMS | St. Croix | \$215,471 | 0.4% | \$1,022,709 | 2.1% | \$1,238,180 | 2.5% |
| Mercy Health System Corporation | Janesville | GMS | Rock | \$5,427,233 | 1.7% | \$7,382,973 | 2.4% | \$12,810,206 | 4.1% |
| Aurora Medical Center - Kenosha | Kenosha | GMS | Kenosha | \$2,998,711 | 1.5% | \$4,990,500 | 2.6% | \$7,989,211 | 4.1% |
| Children's Hospital of Wisconsin - Kenosha | Kenosha | GMS | Kenosha | \$5,456 | 0.1% | \$84,276 | 1.4% | \$90,182 | 1.5% |
| United Hospital System Inc. | Kenosha | GMS | Kenosha | \$7,606,541 | 1.9% | \$7,995,991 | 2.0% | \$15,602,533 | 3.9% |
| Franciscan Skemp Healthcare - La Crosse | La Crosse | GMS | La Crosse | \$2,715,583 | 1.2% | \$4,506,228 | 1.9% | \$7,221,811 | 3.1% |
| Gundersen Lutheran Medical Center Inc | La Crosse | GMS | La Crosse | \$3,285,069 | 0.7% | \$10,218,590 | 2.1% | \$13,503,659 | 2.8% |
| Rusk Co Memorial Hospital & Nursing Home | Ladysmith | GMS | Rusk | \$135,437 | 0.6% | \$551,835 | 2.4% | \$687,272 | 3.0% |
| Grant Regional Health Center Inc | Lancaster | GMS | Grant | \$69,433 | 0.3% | \$265,640 | 1.3% | \$335,073 | 1.6% |
| Meriter Hospital Inc | Madison | GMS | Dane | \$9,757,000 | 2.0% | \$6,984,693 | 1.4% | \$16,741,693 | 3.4% |
| St Marys Hospital Medical Center | Madison | GMS | Dane | \$6,664,461 | 1.4% | \$8,793,302 | 1.9% | \$15,457,763 | 3.3% |
| Univ. of Wis. Hospital & Clinics Authority | Madison | GMS | Dane | \$17,487,181 | 1.5% | \$17,924,717 | 1.5% | \$35,411,898 | 3.0% |
| Holy Family Memorial Medical Center | Manitowoc | GMS | Manitowoc | \$2,896,869 | 1.4% | \$3,843,646 | 1.8% | \$6,740,515 | 3.2% |
| Bay Area Medical Center | Marinette | GMS | Marinette | \$3,109,201 | 1.9% | \$3,810,649 | 2.3% | \$6,919,850 | 4.2% |
| Norwood Health Center | Marshfield | PSYCH | Wood | \$0 | 0.0% | \$14,372 | 0.4% | \$14,372 | 0.4% |
| Saint Joseph's Hospital | Marshfield | GMS | Wood | \$8,200,135 | 1.8% | \$4,228,351 | 0.9% | \$12,428,486 | 2.7% |
| Mile Bluff Medical Center | Mauston | GMS | Juneau | \$1,309,136 | 1.6% | \$2,313,742 | 2.9% | \$3,622,878 | 4.5% |
| Memorial Health Center, Inc | Medford | GMS | Taylor | \$133,032 | 0.4% | \$533,491 | 1.8% | \$666,523 | 2.2% |
| Community Memorial Hospital | Menomonee Falls | GMS | Waukesha | \$3,290,055 | 1.3% | \$541,295 | 0.2% | \$3,831,350 | 1.5% |
| Red Cedar Medical Center | Menomonie | GMS | Dunn | \$225,292 | 0.5% | \$1,612,279 | 3.4% | \$1,837,571 | 3.9% |
| St. Mary's Hospital-Ozaukee | Mequon | GMS | Ozaukee | \$2,735,289 | 1.0% | \$2,992,246 | 1.1% | \$5,727,535 | 2.1% |
| Good Samaritan Health Center | Merrill | GMS | Lincoln | \$597,835 | 2.1% | \$1,442,742 | 5.1% | \$2,040,577 | 7.2% |
| Aurora Sinai Medical Center Inc | Milwaukee | GMS | Milwaukee | \$13,178,339 | 3.3% | \$4,310,000 | 1.1% | \$17,488,339 | 4.4% |
| Children's Hospital of Wisconsin | Milwaukee | GMS | Milwaukee | \$1,850,294 | 0.3% | \$1,980,584 | 0.4% | \$3,830,878 | 0.7% |
| Columbia Center | Milwaukee | GMS | Milwaukee | \$2,716 | 0.0% | \$139,046 | 1.4% | \$141,762 | 1.4% |

| Name | City | Type | County | Charity Care | % Total Patient Revenue | Bad Debt | % Total Patient Revenue | Total Uncompensated Health Care | % Total Patient Revenue |
|--|------------------|------------|-------------|----------------------|-------------------------|----------------------|-------------------------|---------------------------------|-------------------------|
| Total Wisconsin Hospitals | All | All | All | \$338,618,925 | 1.3% | \$397,539,614 | 2.0% | \$736,158,539 | 3.3% |
| Columbia Hospital, Inc. | Milwaukee | GMS | Milwaukee | \$4,713,899 | 1.3% | \$4,332,557 | 1.2% | \$9,046,456 | 2.5% |
| Froedtert Memorial Lutheran Hospital | Milwaukee | GMS | Milwaukee | \$27,711,000 | 2.8% | \$27,550,000 | 2.8% | \$55,261,000 | 5.6% |
| LIFECARE Hospitals of Milwaukee | Milwaukee | GMS | Milwaukee | \$70,632 | 0.2% | \$245,017 | 0.8% | \$315,649 | 1.0% |
| Sacred Heart Rehabilitation Institute | Milwaukee | REHAB | Milwaukee | \$52,130 | 0.2% | \$200,050 | 0.8% | \$252,180 | 1.0% |
| Select Specialty Hospital – Milwaukee – St Luke's | Milwaukee | GMS | Milwaukee | \$0 | 0.0% | \$-99,940 | -0.4% | \$-99,940 | -0.4% |
| St Luke's Medical Center | Milwaukee | GMS | Milwaukee | \$24,290,151 | 1.3% | \$27,270,920 | 1.5% | \$51,561,071 | 2.8% |
| Wheaton Franciscan Healthcare- St. Francis Hospital, Inc. | Milwaukee | GMS | Milwaukee | \$7,714,225 | 1.8% | \$9,575,985 | 2.2% | \$17,290,210 | 4.0% |
| Wheaton Franciscan Healthcare- St. Joseph's Hospital, Inc. | Milwaukee | GMS | Milwaukee | \$13,967,259 | 2.2% | \$11,678,432 | 1.8% | \$25,645,691 | 4.0% |
| St. Mary's Hospital-Milwaukee | Milwaukee | GMS | Milwaukee | \$15,532,140 | 3.7% | \$10,754,827 | 2.5% | \$26,286,967 | 6.2% |
| St. Michael Hospital | Milwaukee | GMS | Milwaukee | \$8,556,444 | 3.4% | \$11,052,778 | 4.4% | \$19,609,222 | 7.8% |
| The Monroe Clinic | Monroe | GMS | Green | \$2,755,350 | 1.5% | \$1,987,908 | 1.1% | \$4,743,258 | 2.6% |
| Children's Hospital of Wisconsin – Fox Valley | Neenah | GMS | Winnebago | \$0 | 0.0% | \$118,267 | 0.8% | \$118,267 | 0.8% |
| Theda Clark Medical Center | Neenah | GMS | Winnebago | \$3,225,000 | 1.5% | \$5,108,000 | 2.3% | \$8,333,000 | 3.8% |
| Memorial Hospital Inc | Neillsville | GMS | Clark | \$215,211 | 0.9% | \$548,151 | 2.3% | \$763,362 | 3.2% |
| New London Family Medical Center | New London | GMS | Outagamie | \$193,096 | 0.6% | \$758,000 | 2.3% | \$951,096 | 2.9% |
| Holy Family Hospital | New Richmond | GMS | St. Croix | \$59,190 | 0.2% | \$1,167,727 | 3.8% | \$1,226,917 | 4.0% |
| Oconomowoc Memorial Hospital | Oconomowoc | GMS | Waukesha | \$358,457 | 0.2% | \$3,731,308 | 2.6% | \$4,089,765 | 2.8% |
| Rogers Memorial Hospital | Oconomowoc | PSYCH | Waukesha | \$507,876 | 1.6% | \$731,925 | 2.4% | \$1,239,801 | 4.0% |
| Community Memorial Hospital | Oconto Falls | GMS | Oconto | \$447,721 | 1.0% | \$1,319,613 | 2.9% | \$1,767,334 | 3.9% |
| Bond Health Center | Oconto Falls | GMS | Oconto | \$2,643 | 0.6% | \$6,683 | 1.4% | \$9,326 | 2.0% |
| Osceola Medical Center | Osceola | GMS | Polk | \$93,656 | 0.4% | \$619,199 | 2.4% | \$712,855 | 2.8% |
| Mercy Medical Center of Oshkosh | Oshkosh | GMS | Winnebago | \$2,000,705 | 1.2% | \$2,020,105 | 1.2% | \$4,020,809 | 2.4% |
| Aurora Medical Center of Oshkosh | Oshkosh | GMS | Oshkosh | \$793,598 | 0.8% | \$2,494,476 | 2.4% | \$3,288,074 | 3.2% |
| Osseo Medical Center | Osseo | GMS | Trempealeau | \$42,601 | 0.6% | \$2224,858 | 3.3% | \$267,459 | 3.9% |
| Flambeau Hospital, Inc. | Park Falls | GMS | Price | \$240,867 | 0.9% | \$393,331 | 1.5% | \$634,198 | 2.4% |
| Southwest Health Center, Inc. | Platteville | GMS | Grant | \$177,320 | 0.6% | \$332,069 | 1.1% | \$509,389 | 1.7% |
| Divine Savior Healthcare | Portage | GMS | Columbia | \$471,701 | 0.5% | \$2,105,500 | 2.4% | \$2,577,201 | 2.9% |
| Prairie du Chien Memorial Hospital | Prairie Du Chien | GMS | Crawford | \$198,253 | 0.8% | \$467,646 | 1.9% | \$665,899 | 2.7% |
| Sauk Prairie Memorial Hospital | Prairie du Sac | GMS | Sauk | \$416,343 | 0.7% | \$893,211 | 1.5% | \$1,309,554 | 2.2% |
| Wheaton Franciscan Healthcare- All Saints, Inc. | Racine | GMS | Racine | \$10,533,662 | 2.1% | \$26,933,306 | 5.5% | \$37,466,968 | 7.6% |
| Reedsburg Area Medical Center | Reedsburg | GMS | Sauk | \$424,647 | 0.8% | \$939,933 | 1.5% | \$1,364,613 | 2.3% |
| Saint Mary's Hospital, Inc. | Rhineland | GMS | Oneida | \$3,156,692 | 2.5% | \$2,989,086 | 2.4% | \$6,145,778 | 4.9% |
| Lakeview Medical Center | Rice Lake | GMS | Barron | \$279,051 | 0.5% | \$983,588 | 1.8% | \$1,262,639 | 2.3% |
| The Richland Hospital Inc | Richland Center | GMS | Richland | \$692,3494 | 1.5% | \$1,221,819 | 2.7% | \$1,914,168 | 4.2% |
| Ripon Medical Center | Ripon | GMS | Fond du Lac | \$63,432 | 0.3% | \$536,190 | 2.2% | \$599,622 | 2.4% |
| River Falls Area Hospital | River Falls | GMS | St. Croix | \$367,267 | 1.0% | \$531,096 | 1.4% | \$898,363 | 2.4% |

| Name | City | Type | County | Charity Care | % Total Patient Revenue | Bad Debt | % Total Patient Revenue | Total Uncompensated Health Care | % Total Patient Revenue |
|---|------------------|------------|-------------|----------------------|-------------------------|----------------------|-------------------------|---------------------------------|-------------------------|
| Total Wisconsin Hospitals | All | All | All | \$338,618,925 | 1.3% | \$397,539,614 | 2.0% | \$736,158,539 | 3.3% |
| Shawano Medical Center | Shawano | GMS | Shawano | \$437,602 | 1.0% | \$1,831,907 | 4.1% | \$2,269,509 | 5.1% |
| Sheboygan Memorial/Valley View Medical Center | Sheboygan | GMS | Sheboygan | \$1,572,406 | 1.1% | \$3,500,785 | 2.3% | \$5,073,191 | 3.4% |
| St. Nicholas Hospital | Sheboygan | GMS | Sheboygan | \$1,257,778 | 1.1% | \$2,022,956 | 1.8% | \$3,280,734 | 2.9% |
| Indianhead Medical Center Shell Lake Inc | Shell Lake | GMS | Washburn | \$0 | 0.0% | \$139,569 | 1.7% | \$139,569 | 1.7% |
| Franciscan Skemp Healthcare – Sparta | Sparta | GMS | Monroe | \$254,835 | 1.5% | \$658,081 | 4.0% | \$912,916 | 5.5% |
| Spooner Health System | Spooner | GMS | Washburn | \$568,165 | 3.0% | \$736,542 | 3.9% | \$1,304,707 | 6.9% |
| St. Croix Regional Medical Center, Inc. | St. Croix Falls | GMS | Polk | \$219,509 | 0.3% | \$904,296 | 1.3% | \$1,123,805 | 1.6% |
| Our Lady of Victory | Stanley | GMS | Chippewa | \$394,000 | 1.8% | \$274,000 | 1.2% | \$668,000 | 3.0% |
| Saint Michael's Hospital | Stevens Point | GMS | Portage | \$3,900,573 | 2.2% | \$3,233,637 | 1.8% | \$7,134,210 | 4.0% |
| Stoughton Hospital Association | Stoughton | GMS | Dane | \$257,351 | 0.5% | \$1,217,000 | 2.6% | \$1,474,351 | 3.1% |
| Door County Memorial Hospital | Sturgeon Bay | GMS | Door | \$1,857,575 | 2.1% | \$1,508,581 | 1.7% | \$3,366,156 | 3.8% |
| St. Mary's Hospital of Superior | Superior | GMS | Douglas | \$624,449 | 2.8% | \$1,411,325 | 6.2% | \$2,035,774 | 9.0% |
| Tomah Memorial Hospital, Inc. | Tomah | GMS | Monroe | \$296,878 | 1.0% | \$1,342,249 | 4.4% | \$1,639,127 | 5.4% |
| Sacred Heart Hospital, Inc. | Tomahawk | GMS | Lincoln | \$312,477 | 2.3% | \$187,745 | 1.4% | \$500,2228 | 3.7% |
| Aurora Medical Center of Manitowoc Co Inc | Two Rivers | GMS | Manitowoc | \$831,311 | 1.1% | \$1,153,256 | 1.5% | \$1,984,567 | 2.6% |
| Vernon Memorial Hospital | Viroqua | GMS | Vernon | \$638,364 | 1.2% | \$1,841,902 | 3.4% | \$2,480,266 | 4.6% |
| Lakeview NeuroRehab Center Midwest | Waterford | REHAB | Racine | \$0 | 0.0% | \$-117,094 | -0.6% | \$-117,094 | -0.6% |
| Watertown Memorial Hospital | Watertown | GMS | Dodge | \$1,306,980 | 1.4% | \$2,075,166 | 2.2% | \$3,382,146 | 3.6% |
| Waukesha County Mental Health Center | Waukesha | PSYCH | Waukesha | \$0 | 0.0% | \$0 | 0.0% | \$0 | 0.0% |
| Waukesha Memorial Hospital, Inc. | Waukesha | GMS | Waukesha | \$1,917,257 | 0.4% | \$11,646,474 | 2.2% | \$13,563,731 | 2.6% |
| Riverside Medical Center | Waupaca | GMS | Waupaca | \$205,601 | 0.5% | \$1,452,496 | 3.2% | \$1,658,097 | 3.7% |
| Waupun Memorial Hospital | Waupun | GMS | Dodge | \$485,754 | 1.4% | \$470,808 | 1.3% | \$956,562 | 2.7% |
| North Central Health Care Facilities | Wausau | PSYCH | Marathon | \$3,815,863 | 22.5% | \$53,564 | 0.3% | \$3,869,427 | 22.8% |
| Aspirus Wausau Hospital | Wausau | GMS | Marathon | \$7,579,322 | 1.9% | \$3,335,735 | 0.9% | \$10,915,057 | 2.8% |
| The Wisconsin Heart Hospital | Wauwatosa | GMS | Milwaukee | \$476,484 | 0.5% | \$1,001,483 | 0.9% | \$1,477,964 | 1.4% |
| Aurora Psychiatric Hospital Inc | Wauwatosa | PSYCH | Milwaukee | \$460,314 | 0.9% | \$1,171,840 | 2.3% | \$1,632,154 | 3.2% |
| Milwaukee County Behavioral Health Division | Wauwatosa | PSYCH | Milwaukee | \$13,902,082 | 12.5% | \$303,416 | 0.3% | \$14,205,498 | 12.8% |
| Rogers Memorial Hospital – Milwaukee | West Allis | PSYCH | Milwaukee | \$85,635 | 0.2% | \$1,347,081 | 3.5% | \$1,432,716 | 3.7% |
| Select Specialty Hospital | West Allis | GMS | Milwaukee | \$0 | 0.0% | \$-344,000 | -1.3% | \$-344,000 | -1.3% |
| West Allis Memorial Hospital | West Allis | GMS | Milwaukee | \$4,197,112 | 1.2% | \$5,241,118 | 1.4% | \$9,438,230 | 2.6% |
| St. Joseph's Community Hospital | West Bend | GMS | Washington | \$1,058,656 | 1.0% | \$2,225,256 | 2.1% | \$3,283,912 | 3.1% |
| Tri-County Memorial Hospital, Inc. | Whitehall | GMS | Trempealeau | \$193,582 | 1.3% | \$112,439 | 0.7% | \$306,021 | 2.0% |
| Wild Rose Community Memorial Hospital Inc | Wild Rose | GMS | Waushara | \$158,033 | 1.6% | \$302,536 | 3.0% | \$460,569 | 4.6% |
| Riverview Hospital Association | Wisconsin Rapids | GMS | Wood | \$548,738 | 0.6% | \$1,765,832 | 2.0% | \$2,314,570 | 2.6% |
| Howard Young Medical Center, Inc. | Woodruff | GMS | Oneida | \$604,497 | 0.6% | \$1,457,072 | 1.4% | \$2,061,569 | 1.9% |

APPENDIX 2:

Charity Care, Bad Debt, and Total Uncompensated Health Care as a Percentage of
Total Gross Non-Government Patient Revenue

FY 2005

| Name | City | Type | County | Charity Care | % Non-Gov't Patient Revenue | Bad Debt | % Non-Gov't Patient Revenue | Total Uncompensated Health Care | % Non-Gov't Patient Revenue |
|--|-------------------|------------|-------------|----------------------|-----------------------------|----------------------|-----------------------------|---------------------------------|-----------------------------|
| Total Wisconsin Hospitals | All | All | All | \$338,618,925 | 3.7% | \$397,539,614 | 4.5% | \$736,158,539 | 8.2% |
| Amery Regional Medical Center | Amery | GMS | Polk | \$281,124 | 1.4% | \$992,276 | 5.0% | \$1,273,400 | 6.4% |
| Langlade Memorial Hospital | Antigo | GMS | Langlade | \$646,489 | 2.4% | \$2,165,148 | 8.0% | \$2,811,637 | 10.4% |
| Appleton Medical Center | Appleton | GMS | Outagamie | \$2,622,200 | 2.0% | \$4,289,400 | 3.2% | \$6,911,600 | 5.2% |
| St Elizabeth Hospital | Appleton | GMS | Outagamie | \$2,174,337 | 2.2% | \$4,930,802 | 5.0% | \$7,105,139 | 7.2% |
| Franciscan Skemp Healthcare - Arcadia | Arcadia | GMS | Trempealeau | \$69,340 | 1.9% | \$202,120 | 5.5% | \$271,460 | 7.4% |
| Memorial Medical Center | Ashland | GMS | Ashland | \$558,854 | 1.9% | \$1,889,084 | 6.3% | \$2,447,938 | 8.1% |
| Baldwin Area Medical Center, Inc. | Baldwin | GMS | St. Croix | \$171,699 | 0.8% | \$1,342,916 | 6.5% | \$1,514,615 | 7.3% |
| St Clare Hospital & Health Services | Baraboo | GMS | Sauk | \$934,807 | 2.4% | \$3,457,190 | 8.9% | \$4,391,277 | 11.4% |
| Barron Memorial Medical Center Inc | Barron | GMS | Barron | \$114,861 | 1.4% | \$584,266 | 7.2% | \$699,127 | 8.6% |
| Beaver Dam Community Hospitals, Inc. | Beaver Dam | GMS | Dodge | \$239,772 | 0.5% | \$2,219,921 | 5.0% | \$2,459,693 | 5.5% |
| Beloit Memorial Hospital Inc | Beloit | GMS | Rock | \$7,005,859 | 9.5% | \$4,273,583 | 5.8% | \$11,279,442 | 15.3% |
| Berlin Memorial Hospital | Berlin | GMS | Green Lake | \$1,373,852 | 4.1% | \$1,400,878 | 4.2% | \$2,774,730 | 8.4% |
| Black River Memorial Hospital | Black River Falls | GMS | Jackson | \$212,653 | 1.4% | \$1,712,184 | 7.9% | \$1,384,837 | 9.3% |
| Bloomer Medical Center - Mayo Health Systems | Bloomer | GMS | Chippewa | \$51,716 | 1.1% | \$280,000 | 6.2% | \$331,716 | 7.4% |
| Boscobel Area Health Care | Boscobel | GMS | Grant | \$21,882 | 0.3% | \$387,947 | 4.4% | \$409,829 | 4.7% |
| Wheaton Franciscan Healthcare- Elmbrook Memorial, Inc. | Brookfield | GMS | Waukesha | \$1,200,867 | 0.7% | \$2,125,708 | 1.3% | \$3,326,575 | 2.0% |
| Memorial Hospital of Burlington | Burlington | GMS | Racine | \$1,612,388 | 3.0% | \$2,033,600 | 3.8% | \$3,645,988 | 6.8% |
| Calumet Medical Center, Inc. | Chilton | GMS | Calumet | \$185,720 | 2.7% | \$345,512 | 5.0% | \$531,232 | 7.7% |
| St Joseph's Hospital | Chippewa Falls | GMS | Chippewa | \$1,787,824 | 4.9% | \$1,365,000 | 3.7% | \$3,152,824 | 8.6% |
| Columbus Community Hospital | Columbus | GMS | Columbia | \$173,577 | 1.1% | \$606,831 | 3.7% | \$780,408 | 4.8% |
| Cumberland Memorial Hospital, Inc. | Cumberland | GMS | Barron | \$163,988 | 1.9% | \$413,741 | 4.7% | \$577,739 | 6.6% |
| Memorial Hospital of Lafayette County | Darlington | GMS | Lafayette | \$10,679 | 0.2% | \$125,511 | 2.7% | \$136,190 | 3.0% |
| Upland Hills Health, Inc. | Dodgeville | GMS | Iowa | \$620,750 | 2.8% | \$652,500 | 2.9% | \$1,273,250 | 5.7% |
| Chippewa Valley Hospital | Durand | GMS | Pepin | \$29,820 | 0.7% | \$186,265 | 4.1% | \$216,087 | 4.8% |
| Eagle River Memorial Hospital | Eagle River | GMS | Vilas | \$153,601 | 1.5% | \$430,087 | 4.1% | \$583,688 | 5.6% |
| Luther Hospital | Eau Claire | GMS | Eau Claire | \$6,339,398 | 4.8% | \$4,720,947 | 3.6% | \$11,060,345 | 8.4% |
| Oakleaf Surgical Hospital | Eau Claire | GMS | Eau Claire | \$0 | 0.0% | \$0 | 0.0% | \$0 | 0.0% |
| Sacred Heart Hospital | Eau Claire | GMS | Eau Claire | \$3,284,192 | 3.3% | \$4,293,061 | 4.3% | \$7,577,253 | 7.6% |
| Memorial Community Hospital | Edgerton | GMS | Rock | \$157,975 | 1.2% | \$645,999 | 4.8% | \$803,974 | 6.0% |
| Aurora Lakeland Medical Center | Elkhorn | GMS | Walworth | \$1,840,190 | 3.4% | \$2,626,000 | 4.8% | \$4,466,190 | 8.2% |
| Agnesian HealthCare/St Agnes Hospital | Fond du Lac | GMS | Fond du Lac | \$7,354,429 | 4.0% | \$4,135,690 | 2.2% | \$11,490,119 | 6.2% |
| Fond du Lac County Health Care Center | Fond du Lac | PSYCH | Fond du Lac | \$0 | 0.0% | \$119,328 | 24.8% | \$119,328 | 24.8% |
| Fort HealthCare | Fort Atkinson | GMS | Jefferson | \$943,217 | 1.2% | \$2,453,850 | 3.1% | \$3,397,067 | 4.3% |
| Moundview Memorial Hospital & Clinics, Inc | Friendship | GMS | Adams | \$374,274 | 5.9% | \$589,268 | 9.2% | \$963,542 | 15.1% |
| Orthopaedic Hospital of Wisconsin - Glendale | Glendale | GMS | Milwaukee | \$125,634 | 0.4% | \$661,841 | 1.9% | \$787,475 | 2.3% |
| Burnett Medical Center | Grantsburg | GMS | Burnett | \$340,634 | 4.6% | \$558,449 | 7.5% | \$899,083 | 12.1% |

| Name | City | Type | County | Charity Care | % Non-Gov't Patient Revenue | Bad Debt | % Non-Gov't Patient Revenue | Total Uncompensated Health Care | % Non-Gov't Patient Revenue |
|---|-----------------|------------|------------|----------------------|-----------------------------|----------------------|-----------------------------|---------------------------------|-----------------------------|
| Total Wisconsin Hospitals | All | All | All | \$338,618,925 | 3.7% | \$397,539,614 | 4.5% | \$736,158,539 | 8.2% |
| BayCare Aurora LLC d/b/a Aurora BayCare Med Ctr | Green Bay | GMS | Brown | \$3,550,416 | 2.2% | \$6,999,608 | 4.3% | \$10,550,024 | 6.5% |
| Bellin Memorial Hospital | Green Bay | GMS | Brown | \$4,554,675 | 2.3% | \$4,207,622 | 2.1% | \$8,762,297 | 4.3% |
| Bellin Psychiatric Center | Green Bay | PSYCH | Brown | \$211,619 | 1.3% | \$420,689 | 2.7% | \$632,308 | 4.0% |
| Brown County Mental Health Center | Green Bay | PSYCH | Brown | \$0 | 0.0% | \$0 | 0.0% | \$0 | 0.0% |
| Libertas Treatment Center | Green Bay | AODA | Brown | \$3,222 | 0.2% | \$38,164 | 1.9% | \$41,386 | 2.1% |
| St. Mary's Hospital Medical Center | Green Bay | GMS | Brown | \$2,450,930 | 3.5% | 2,530,652 | 3.6% | \$4,981,582 | 7.1% |
| St. Vincent Hospital | Green Bay | GMS | Brown | \$9,050,521 | 5.4% | \$6,115,790 | 3.6% | \$15,166,311 | 9.0% |
| Kindred Hospital - Milwaukee | Greenfield | GMS | Milwaukee | \$0 | 0.0% | \$0 | 0.0% | \$0 | 0.0% |
| Aurora Medical Center of Washington County Inc | Hartford | GMS | Washington | \$799,505 | 1.7% | \$1,334,437 | 2.9% | \$2,133,942 | 4.6% |
| Hayward Area Memorial Hospital | Hayward | GMS | Sawyer | \$177,999 | 1.4% | \$1,108,189 | 8.8% | 1,286,188 | 10.2% |
| St. Joseph's Comm. Health Services, Inc. | Hillsboro | GMS | Vernon | \$2,627 | 0.0% | \$434,506 | 4.7% | \$437,133 | 4.7% |
| Hudson Hospital | Hudson | GMS | St. Croix | \$215,471 | 0.6% | \$1,022,709 | 3.0% | \$1,238,180 | 3.6% |
| Mercy Health System Corporation | Janesville | GMS | Rock | \$5,427,233 | 3.4% | \$7,382,973 | 4.6% | \$12,810,206 | 7.9% |
| Aurora Medical Center - Kenosha | Kenosha | GMS | Kenosha | \$2,998,711 | 3.3% | \$4,990,500 | 5.4% | \$7,989,211 | 8.7% |
| Children's Hospital of Wisconsin - Kenosha | Kenosha | GMS | Kenosha | \$5,456 | 0.1% | \$84,276 | 1.9% | \$90,182 | 2.0% |
| United Hospital System Inc. | Kenosha | GMS | Kenosha | \$7,606,541 | 4.0% | \$7,995,991 | 4.2% | \$15,602,533 | 8.2% |
| Franciscan Skemp Healthcare - La Crosse | La Crosse | GMS | La Crosse | \$2,715,583 | 2.5% | \$4,506,228 | 4.2% | \$7,221,811 | 6.7% |
| Gundersen Lutheran Medical Center Inc | La Crosse | GMS | La Crosse | \$3,285,069 | 1.7% | \$10,218,590 | 5.2% | \$13,503,659 | 6.9% |
| Rusk Co Memorial Hospital & Nursing Home | Ladysmith | GMS | Rusk | \$135,437 | 1.6% | \$551,835 | 6.4% | \$687,272 | 8.0% |
| Grant Regional Health Center Inc | Lancaster | GMS | Grant | \$69,433 | 0.7% | \$265,640 | 2.9% | \$335,073 | 3.6% |
| Meriter Hospital Inc | Madison | GMS | Dane | \$9,757,000 | 3.9% | \$6,984,693 | 2.8% | \$16,741,693 | 6.7% |
| St Marys Hospital Medical Center | Madison | GMS | Dane | \$6,664,461 | 3.1% | \$8,793,302 | 4.0% | \$15,457,763 | 7.1% |
| Univ. of Wis. Hospital & Clinics Authority | Madison | GMS | Dane | \$17,487,181 | 2.5% | \$17,924,717 | 2.6% | \$35,411,898 | 5.1% |
| Holy Family Memorial Medical Center | Manitowoc | GMS | Manitowoc | \$2,896,869 | 3.1% | \$3,843,646 | 4.1% | \$6,740,515 | 7.2% |
| Bay Area Medical Center | Marinette | GMS | Marinette | \$3,109,201 | 4.1% | \$3,810,649 | 5.0% | \$6,919,850 | 9.0% |
| Norwood Health Center | Marshfield | PSYCH | Wood | \$0. | 0.0% | \$14,372 | 1.4% | \$14,372 | 1.4% |
| Saint Joseph's Hospital | Marshfield | GMS | Wood | \$8,200,135 | 4.6% | \$4,228,351 | 2.4% | \$12,428,486 | 7.0% |
| Mile Bluff Medical Center | Mauston | GMS | Juneau | \$1,309,136 | 4.1% | \$2,313,742 | 7.2% | \$3,622,878 | 11.2% |
| Memorial Health Center, Inc | Medford | GMS | Taylor | \$133,032 | 0.9% | \$533,491 | 3.4% | \$666,523 | 4.3% |
| Community Memorial Hospital | Menomonee Falls | GMS | Waukesha | \$3,290,055 | 2.8% | \$541,295 | 0.5% | \$3,831,350 | 3.3% |
| Red Cedar Medical Center | Menomonie | GMS | Dunn | \$225,292 | 0.9% | \$1,612,279 | 6.4% | \$1,837,571 | 7.3% |
| St. Mary's Hospital-Ozaukee | Mequon | GMS | Ozaukee | \$2,735,289 | 1.9% | \$2,992,246 | 2.1% | \$5,727,535 | 4.0% |
| Good Samaritan Health Center | Merrill | GMS | Lincoln | \$597,835 | 4.3% | \$1,442,742 | 10.3% | \$2,040,577 | 14.6% |
| Aurora Sinai Medical Center Inc | Milwaukee | GMS | Milwaukee | \$13,178,339 | 10.4% | \$4,310,000 | 3.4% | \$17,488,339 | 13.8% |
| Children's Hospital of Wisconsin | Milwaukee | GMS | Milwaukee | \$1,850,294 | 0.6% | \$1,980,584 | 0.6% | \$3,830,878 | 1.2% |
| Columbia Center | Milwaukee | GMS | Milwaukee | \$2,716 | 0.0% | \$139,046 | 1.6% | \$141,762 | 1.6% |

| Name | City | Type | County | Charity Care | % Non-Gov't Patient Revenue | Bad Debt | % Non-Gov't Patient Revenue | Total Uncompensated Health Care | % Non-Gov't Patient Revenue |
|--|------------------|------------|-------------|----------------------|-----------------------------|----------------------|-----------------------------|---------------------------------|-----------------------------|
| Total Wisconsin Hospitals | All | All | All | \$338,618,925 | 3.7% | \$397,539,614 | 4.5% | \$736,158,539 | 8.2% |
| Columbia Hospital, Inc. | Milwaukee | GMS | Milwaukee | \$4,713,899 | 2.8% | \$4,332,557 | 2.5% | \$9,046,456 | 5.3% |
| Froedtert Memorial Lutheran Hospital | Milwaukee | GMS | Milwaukee | \$27,711,000 | 5.5% | \$27,550,000 | 5.4% | \$55,261,000 | 10.9% |
| LIFECARE Hospitals of Milwaukee | Milwaukee | GMS | Milwaukee | \$70,632 | 1.4% | \$245,017 | 4.8% | \$315,649 | 6.2% |
| Sacred Heart Rehabilitation Institute | Milwaukee | REHAB | Milwaukee | \$52,130 | 0.5% | \$200,050 | 1.8% | \$252,180 | 2.3% |
| Select Specialty Hospital – Milwaukee – St Luke's | Milwaukee | GMS | Milwaukee | \$0 | 0.0% | \$-99,940 | -2.5% | \$-99,940 | -2.5% |
| St Luke's Medical Center | Milwaukee | GMS | Milwaukee | \$24,290,151 | 3.4% | \$27,270,920 | 3.9% | \$51,561,071 | 7.3% |
| Wheaton Franciscan Healthcare- St. Francis Hospital, Inc. | Milwaukee | GMS | Milwaukee | \$7,714,225 | 3.8% | \$9,575,985 | 4.8% | \$17,290,210 | 8.6% |
| Wheaton Franciscan Healthcare- St. Joseph's Hospital, Inc. | Milwaukee | GMS | Milwaukee | \$13,967,259 | 5.3% | \$11,678,432 | 4.5% | \$25,645,691 | 9.8% |
| St. Mary's Hospital-Milwaukee | Milwaukee | GMS | Milwaukee | \$15,532,140 | 7.1% | \$10,754,827 | 4.9% | \$26,286,967 | 12.0% |
| St. Michael Hospital | Milwaukee | GMS | Milwaukee | \$8,556,444 | 9.2% | \$11,052,778 | 1.9% | \$19,609,222 | 21.1% |
| The Monroe Clinic | Monroe | GMS | Green | \$2,755,350 | 3.1% | \$1,987,908 | 2.3% | \$4,743,258 | 5.4% |
| Children's Hospital of Wisconsin – Fox Valley | Neenah | GMS | Winnebago | \$0 | 0.0% | \$118,267 | 0.9% | \$118,267 | 0.9% |
| Theda Clark Medical Center | Neenah | GMS | Winnebago | \$3,225,000 | 2.6% | \$5,108,000 | 4.0% | \$8,333,000 | 6.6% |
| Memorial Hospital Inc | Neillsville | GMS | Clark | \$215,211 | 2.2% | \$548,151 | 5.5% | \$763,362 | 7.7% |
| New London Family Medical Center | New London | GMS | Outagamie | \$193,096 | 1.2% | \$758,000 | 4.7% | \$951,096 | 5.9% |
| Holy Family Hospital | New Richmond | GMS | St. Croix | \$59,190 | 0.4% | \$1,167,727 | 7.1% | \$1,226,917 | 7.5% |
| Oconomowoc Memorial Hospital | Oconomowoc | GMS | Waukesha | \$358,457 | 0.4% | \$3,731,308 | 4.3% | \$4,089,765 | 4.7% |
| Rogers Memorial Hospital | Oconomowoc | PSYCH | Waukesha | \$507,876 | 1.9% | \$731,925 | 2.8% | \$1,239,801 | 4.7% |
| Community Memorial Hospital | Oconto Falls | GMS | Oconto | \$447,721 | 2.3% | \$1,319,613 | 6.7% | \$1,767,334 | 8.9% |
| Bond Health Center | Oconto Falls | GMS | Oconto | \$2,643 | 1.2% | \$6,683 | 3.1% | \$9,326 | 4.4% |
| Osceola Medical Center | Osceola | GMS | Polk | \$93,656 | 0.6% | \$619,199 | 4.2% | \$712,855 | 4.8% |
| Mercy Medical Center of Oshkosh | Oshkosh | GMS | Winnebago | \$2,000,705 | 2.7% | \$2,020,105 | 2.7% | \$4,020,809 | 5.4% |
| Aurora Medical Center of Oshkosh | Oshkosh | GMS | Oshkosh | \$793,598 | 1.4% | \$2,494,476 | 4.5% | \$3,288,074 | 5.9% |
| Osseo Medical Center | Osseo | GMS | Trempealeau | \$42,601 | 2.0% | \$2224,858 | 10.6% | \$267,459 | 12.6% |
| Flambeau Hospital, Inc. | Park Falls | GMS | Price | \$240,867 | 2.9% | \$393,331 | 4.8% | \$634,198 | 7.7% |
| Southwest Health Center, Inc. | Platteville | GMS | Grant | \$177,320 | 1.5% | \$332,069 | 2.7% | \$509,389 | 4.2% |
| Divine Savior Healthcare | Portage | GMS | Columbia | \$471,701 | 1.2% | \$2,105,500 | 5.4% | \$2,577,201 | 6.6% |
| Prairie du Chien Memorial Hospital | Prairie Du Chien | GMS | Crawford | \$198,253 | 2.1% | \$467,646 | 4.9% | \$665,899 | 7.0% |
| Sauk Prairie Memorial Hospital | Prairie du Sac | GMS | Sauk | \$416,343 | 1.3% | \$893,211 | 2.8% | \$1,309,554 | 4.1% |
| Wheaton Franciscan Healthcare- All Saints, Inc. | Racine | GMS | Racine | \$10,533,662 | 4.8% | \$26,933,306 | 12.2% | \$37,466,968 | 17.0% |
| Reedsburg Area Medical Center | Reedsburg | GMS | Sauk | \$424,647 | 1.5% | \$939,933 | 3.4% | \$1,364,613 | 5.0% |
| Saint Mary's Hospital, Inc. | Rhineland | GMS | Oneida | \$3,156,692 | 6.2% | \$2,989,086 | 5.9% | \$6,145,778 | 12.1% |
| Lakeview Medical Center | Rice Lake | GMS | Barron | \$279,051 | 1.2% | \$983,588 | 4.3% | \$1,262,639 | 5.5% |
| The Richland Hospital Inc | Richland Center | GMS | Richland | \$692,3494 | 3.4% | \$1,221,819 | 6.0% | \$1,914,168 | 9.4% |
| Ripon Medical Center | Ripon | GMS | Fond du Lac | \$63,432 | 0.7% | \$536,190 | 5.8% | \$599,622 | 6.5% |
| River Falls Area Hospital | River Falls | GMS | St. Croix | \$367,267 | 1.6% | \$531,096 | 2.3% | \$898,363 | 3.9% |

| Name | City | Type | County | Charity Care | % Non-Gov't Patient Revenue | Bad Debt | % Non-Gov't Patient Revenue | Total Uncompensated Health Care | % Non-Gov't Patient Revenue |
|---|------------------|------------|-------------|----------------------|-----------------------------|----------------------|-----------------------------|---------------------------------|-----------------------------|
| Total Wisconsin Hospitals | All | All | All | \$338,618,925 | 3.7% | \$397,539,614 | 4.5% | \$736,158,539 | 8.2% |
| Shawano Medical Center | Shawano | GMS | Shawano | \$437,602 | 2.3% | \$1,831,907 | 9.7% | \$2,269,509 | 12.0% |
| Sheboygan Memorial/Valley View Medical Center | Sheboygan | GMS | Sheboygan | \$1,572,406 | 1.9% | \$3,500,785 | 4.1% | \$5,073,191 | 6.0% |
| St. Nicholas Hospital | Sheboygan | GMS | Sheboygan | \$1,257,778 | 2.8% | \$2,022,956 | 4.5% | \$3,280,734 | 7.4% |
| Indianhead Medical Center Shell Lake Inc | Shell Lake | GMS | Washburn | \$0 | 0.0% | \$139,569 | 5.8% | \$139,569 | 5.8% |
| Franciscan Skemp Healthcare – Sparta | Sparta | GMS | Monroe | \$254,835 | 3.7% | \$658,081 | 9.5% | \$912,916 | 13.2% |
| Spooner Health System | Spooner | GMS | Washburn | \$568,165 | 7.9% | \$736,542 | 10.2% | \$1,304,707 | 18.1% |
| St. Croix Regional Medical Center, Inc. | St. Croix Falls | GMS | Polk | \$219,509 | 0.6% | \$904,296 | 2.3% | \$1,123,805 | 2.9% |
| Our Lady of Victory | Stanley | GMS | Chippewa | \$394,000 | 5.1% | \$274,000 | 3.5% | \$668,000 | 8.6% |
| Saint Michael's Hospital | Stevens Point | GMS | Portage | \$3,900,573 | 4.3% | \$3,233,637 | 3.6% | \$7,134,210 | 8.0% |
| Stoughton Hospital Association | Stoughton | GMS | Dane | \$257,351 | 1.3% | \$1,217,000 | 6.2% | \$1,474,351 | 7.5% |
| Door County Memorial Hospital | Sturgeon Bay | GMS | Door | \$1,857,575 | 5.3% | \$1,508,581 | 4.3% | \$3,366,156 | 9.6% |
| St. Mary's Hospital of Superior | Superior | GMS | Douglas | \$624,449 | 6.8% | \$1,411,325 | 15.5% | \$2,035,774 | 22.3% |
| Tomah Memorial Hospital, Inc. | Tomah | GMS | Monroe | \$296,878 | 2.2% | \$1,342,249 | 9.9% | \$1,639,127 | 12.1% |
| Sacred Heart Hospital, Inc. | Tomahawk | GMS | Lincoln | \$312,477 | 6.2% | \$187,745 | 3.7% | \$500,2228 | 9.9% |
| Aurora Medical Center of Manitowoc Co Inc | Two Rivers | GMS | Manitowoc | \$831,311 | 2.5% | \$1,153,256 | 3.5% | \$1,984,567 | 6.0% |
| Vernon Memorial Hospital | Viroqua | GMS | Vernon | \$638,364 | 2.9% | \$1,841,902 | 8.3% | \$2,480,266 | 11.2% |
| Lakeview NeuroRehab Center Midwest | Waterford | REHAB | Racine | \$0 | 0.0% | -\$117,094 | -2.2% | -\$117,094 | -2.2% |
| Watertown Memorial Hospital | Watertown | GMS | Dodge | \$1,306,980 | 2.6% | \$2,075,166 | 4.1% | \$3,382,146 | 6.7% |
| Waukesha County Mental Health Center | Waukesha | PSYCH | Waukesha | \$0 | 0.0% | \$0 | 0.0% | \$0 | 0.0% |
| Waukesha Memorial Hospital, Inc. | Waukesha | GMS | Waukesha | \$1,917,257 | 0.6% | \$11,646,474 | 3.9% | \$13,563,731 | 4.5% |
| Riverside Medical Center | Waupaca | GMS | Waupaca | \$205,601 | 1.0% | \$1,452,496 | 7.3% | \$1,658,097 | 8.3% |
| Waupun Memorial Hospital | Waupun | GMS | Dodge | \$485,754 | 3.1% | \$470,808 | 3.0% | \$956,562 | 6.1% |
| North Central Health Care Facilities | Wausau | PSYCH | Marathon | \$3,815,863 | 136.9% | \$53,564 | 1.9% | \$3,869,427 | 138.8% |
| Aspirus Wausau Hospital | Wausau | GMS | Marathon | \$7,579,322 | 4.8% | \$3,335,735 | 2.1% | \$10,915,057 | 6.9% |
| The Wisconsin Heart Hospital | Wauwatosa | GMS | Milwaukee | \$476,484 | 1.3% | \$1,001,483 | 2.7% | \$1,477,964 | 3.9% |
| Aurora Psychiatric Hospital Inc | Wauwatosa | PSYCH | Milwaukee | \$460,314 | 1.5% | \$1,171,840 | 3.8% | \$1,632,154 | 5.3% |
| Milwaukee County Behavioral Health Division | Wauwatosa | PSYCH | Milwaukee | \$13,902,082 | 56.1% | \$303,416 | 1.2% | \$14,205,498 | 57.3% |
| Rogers Memorial Hospital – Milwaukee | West Allis | PSYCH | Milwaukee | \$85,635 | 0.5% | \$1,347,081 | 8.5% | \$1,432,716 | 9.0% |
| Select Specialty Hospital | West Allis | GMS | Milwaukee | \$0 | 0.0% | -\$344,000 | -11.0% | -\$344,000 | -11.0% |
| West Allis Memorial Hospital | West Allis | GMS | Milwaukee | \$4,197,112 | 2.5% | \$5,241,118 | 3.1% | \$9,438,230 | 5.6% |
| St. Joseph's Community Hospital | West Bend | GMS | Washington | \$1,058,656 | 2.3% | \$2,225,256 | 4.8% | \$3,283,912 | 7.1% |
| Tri-County Memorial Hospital, Inc. | Whitehall | GMS | Trempealeau | \$193,582 | 4.6% | \$112,439 | 2.7% | \$306,021 | 7.3% |
| Wild Rose Community Memorial Hospital Inc | Wild Rose | GMS | Waushara | \$158,033 | 5.2% | \$302,536 | 9.9% | \$460,569 | 15.1% |
| Riverview Hospital Association | Wisconsin Rapids | GMS | Wood | \$548,738 | 1.4% | \$1,765,832 | 4.5% | \$2,314,570 | 5.9% |
| Howard Young Medical Center, Inc. | Woodruff | GMS | Oneida | \$604,497 | 1.5% | \$1,457,072 | 3.5% | \$2,061,569 | 5.0% |

APPENDIX 3:

Number of Patients Receiving and Projected to Receive Uncompensated Health Care

FY 2005

| Name | City | Type | County | Charity Cases FY 2005 | Projected Charity Cases FY 2006 | Bad Debt Cases FY 2005 | Projected Bad Debt Cases FY 2006 | Total Uncomp. Cases FY 2005 | Projected Uncomp. Cases FY 2006 |
|--|-------------------|------------|-------------|--------------------------|---------------------------------------|------------------------------|---|--------------------------------------|--|
| Total Wisconsin Hospitals | All | All | All | 250,037 | 275,892 | 715,044 | 759,987 | 965,081 | 1,035,879 |
| Amery Regional Medical Center | Amery | GMS | Polk | 650 | 720 | 6,430 | 6,310 | 7,080 | 7,030 |
| Langlade Memorial Hospital | Antigo | GMS | Langlade | 1,272 | 1,422 | 5,411 | 5,998 | 6,683 | 7,420 |
| Appleton Medical Center | Appleton | GMS | Outagamie | 3,688 | 4,000 | 8,078 | 8,600 | 11,766 | 12,600 |
| St Elizabeth Hospital | Appleton | GMS | Outagamie | 1,184 | 1,091 | 7,731 | 6,079 | 8,915 | 7,170 |
| Franciscan Skemp Healthcare - Arcadia | Arcadia | GMS | Trempealeau | 55 | 55 | 260 | 260 | 315 | 315 |
| Memorial Medical Center | Ashland | GMS | Ashland | 547 | 700 | 2,426 | 3,000 | 2,973 | 3,700 |
| Baldwin Area Medical Center, Inc. | Baldwin | GMS | St. Croix | 35 | 35 | 2,345 | 2,350 | 2,377 | 2,385 |
| St Clare Hospital & Health Services | Baraboo | GMS | Sauk | 1,143 | 1,257 | 5,942 | 6,536 | 7,085 | 7,793 |
| Barron Memorial Medical Center Inc | Barron | GMS | Barron | 400 | 400 | 1,406 | 1,406 | 1,806 | 1,806 |
| Beaver Dam Community Hospitals, Inc. | Beaver Dam | GMS | Dodge | 187 | 187 | 3,596 | 3,596 | 3,783 | 3,783 |
| Beloit Memorial Hospital Inc | Beloit | GMS | Rock | 1,652 | 1,652 | 5,313 | 5,313 | 6,965 | 6,965 |
| Berlin Memorial Hospital | Berlin | GMS | Green Lake | 1,460 | 1,250 | 8,502 | 9,600 | 9,962 | 10,850 |
| Black River Memorial Hospital | Black River Falls | GMS | Jackson | 40 | 40 | 1,300 | 1,200 | 1,340 | 1,240 |
| Bloomer Medical Center - Mayo Health Systems | Bloomer | GMS | Chippewa | 42 | 50 | 861 | 890 | 903 | 940 |
| Boscobel Area Health Care | Boscobel | GMS | Grant | 148 | 250 | 997 | 1,030 | 1,145 | 1,280 |
| Wheaton Franciscan Healthcare- Elmbrook Memorial, Inc. | Brookfield | GMS | Waukesha | 1,028 | 1,252 | 2,398 | 2,934 | 3,426 | 4,186 |
| Memorial Hospital of Burlington | Burlington | GMS | Racine | 1,490 | 1,554 | 5,016 | 5,232 | 6,506 | 6,786 |
| Calumet Medical Center, Inc. | Chilton | GMS | Calumet | 414 | 497 | 1,718 | 2,061 | 2,132 | 2,558 |
| St Joseph's Hospital | Chippewa Falls | GMS | Chippewa | 3,841 | 6,950 | 5,879 | 3,750 | 9,720 | 10,700 |
| Columbus Community Hospital | Columbus | GMS | Columbia | 100 | 85 | 1,305 | 1,325 | 1,405 | 1,410 |
| Cumberland Memorial Hospital, Inc. | Cumberland | GMS | Barron | 172 | 200 | 1,424 | 1,700 | 1,596 | 1,900 |
| Memorial Hospital of Lafayette County | Darlington | GMS | Lafayette | 15 | 30 | 40 | 25 | 55 | 55 |
| Upland Hills Health, Inc. | Dodgeville | GMS | Iowa | 500 | 600 | 1,180 | 1,250 | 1,680 | 1,850 |
| Chippewa Valley Hospital | Durand | GMS | Pepin | 30 | 32 | 180 | 185 | 210 | 217 |
| Eagle River Memorial Hospital | Eagle River | GMS | Vilas | 179 | 538 | 3,090 | 10,540 | 3,269 | 11,078 |
| Luther Hospital | Eau Claire | GMS | Eau Claire | 1,881 | 2,200 | 6,431 | 7,000 | 8,312 | 9,200 |
| Oakleaf Surgical Hospital | Eau Claire | GMS | Eau Claire | 0 | 0 | 0 | 0 | 0 | 0 |
| Sacred Heart Hospital | Eau Claire | GMS | Eau Claire | 1,155 | 1,372 | 4,803 | 4,164 | 5,958 | 5,536 |
| Memorial Community Hospital | Edgerton | GMS | Rock | 102 | 112 | 1,588 | 1,747 | 1,690 | 1,859 |
| Aurora Lakeland Medical Center | Elkhorn | GMS | Walworth | 1,887 | 1,439 | 5,442 | 6,203 | 7,329 | 7,642 |
| Agnesian HealthCare/St Agnes Hospital | Fond du Lac | GMS | Fond du Lac | 5,381 | 5,800 | 8,122 | 8,300 | 13,503 | 14,100 |
| Fond du Lac County Health Care Center | Fond du Lac | PSYCH | Fond du Lac | 0 | 0 | 0 | 0 | 0 | 0 |
| Fort HealthCare | Fort Atkinson | GMS | Jefferson | 561 | 575 | 6,152 | 6,200 | 6,713 | 6,775 |
| Moundview Memorial Hospital & Clinics, Inc | Friendship | GMS | Adams | 76 | 100 | 263 | 300 | 339 | 400 |
| Orthopaedic Hospital of Wisconsin - Glendale | Glendale | GMS | Milwaukee | 117 | 149 | 1,215 | 1,514 | 1,332 | 1,663 |
| Burnett Medical Center | Grantsburg | GMS | Burnett | 447 | 500 | 1,549 | 1,750 | 1,996 | 2,250 |

| Name | City | Type | County | Charity Cases FY 2005 | Projected Charity Cases FY 2006 | Bad Debt Cases FY 2005 | Projected Bad Debt Cases FY 2006 | Total Uncomp. Cases FY 2005 | Projected Uncomp. Cases FY 2006 |
|---|-----------------|------------|------------|--------------------------|---------------------------------------|------------------------------|---|--------------------------------------|--|
| Total Wisconsin Hospitals | All | All | All | 250,037 | 275,892 | 715,044 | 759,987 | 965,081 | 1,035,879 |
| BayCare Aurora LLC d/b/a Aurora BayCare Med Ctr | Green Bay | GMS | Brown | 2,176 | 2,455 | 7,608 | 6,097 | 9,784 | 8,552 |
| Bellin Memorial Hospital | Green Bay | GMS | Brown | 2,441 | 2,563 | 9,320 | 9,786 | 11,761 | 12,349 |
| Bellin Psychiatric Center | Green Bay | PSYCH | Brown | 140 | 145 | 246 | 225 | 386 | 370 |
| Brown County Mental Health Center | Green Bay | PSYCH | Brown | 0 | 0 | 0 | 0 | 0 | 0 |
| Libertas Treatment Center | Green Bay | AODA | Brown | 62 | 100 | 165 | 200 | 227 | 300 |
| St. Mary's Hospital Medical Center | Green Bay | GMS | Brown | 1,702 | 1,750 | 8,894 | 10,075 | 10,569 | 11,825 |
| St. Vincent Hospital | Green Bay | GMS | Brown | 9,903 | 10,224 | 8,948 | 9,200 | 18,851 | 19,424 |
| Kindred Hospital - Milwaukee | Greenfield | GMS | Milwaukee | 0 | 0 | 30 | 0 | 30 | 0 |
| Aurora Medical Center of Washington County Inc | Hartford | GMS | Washington | 829 | 870 | 2,621 | 2,752 | 3,450 | 36,22 |
| Hayward Area Memorial Hospital | Hayward | GMS | Sawyer | 175 | 200 | 2,646 | 2,800 | 2,821 | 3,000 |
| St. Joseph's Comm. Health Services, Inc. | Hillsboro | GMS | Vernon | 1 | 30 | 1,500 | 2,019 | 1,501 | 2,049 |
| Hudson Hospital | Hudson | GMS | St. Croix | 321 | 339 | 452 | 477 | 773 | 816 |
| Mercy Health System Corporation | Janesville | GMS | Rock | 5,115 | 5,412 | 20,252 | 24,179 | 25,367 | 29,591 |
| Aurora Medical Center - Kenosha | Kenosha | GMS | Kenosha | 2,268 | 2,396 | 9,776 | 10,329 | 12,044 | 12,725 |
| Children's Hospital of Wisconsin - Kenosha | Kenosha | GMS | Kenosha | 10 | 0 | 326 | 312 | 336 | 312 |
| United Hospital System Inc. | Kenosha | GMS | Kenosha | 5,149 | 5,715 | 16,604 | 19,095 | 21,753 | 24,810 |
| Franciscan Skemp Healthcare - La Crosse | La Crosse | GMS | La Crosse | 560 | 600 | 1,275 | 1,300 | 1,835 | 1,900 |
| Gundersen Lutheran Medical Center Inc | La Crosse | GMS | La Crosse | 762 | 775 | 6,669 | 7,000 | 7,431 | 7,775 |
| Rusk Co Memorial Hospital & Nursing Home | Ladysmith | GMS | Rusk | 77 | 65 | 1,909 | 1,900 | 1,986 | 1,65 |
| Grant Regional Health Center Inc | Lancaster | GMS | Grant | 163 | 165 | 978 | 1,000 | 1,141 | 1,165 |
| Meriter Hospital Inc | Madison | GMS | Dane | 4,938 | 5,318 | 10,084 | 9,581 | 15,022 | 14,899 |
| St Marys Hospital Medical Center | Madison | GMS | Dane | 1,493 | 1,600 | 7,853 | 8,000 | 9,346 | 9,600 |
| Univ. of Wis. Hospital & Clinics Authority | Madison | GMS | Dane | 6,934 | 9,740 | 27,486 | 31,804 | 34,420 | 41,544 |
| Holy Family Memorial Medical Center | Manitowoc | GMS | Manitowoc | 1,362 | 1,429 | 5,587 | 5,159 | 6,949 | 6,588 |
| Bay Area Medical Center | Marinette | GMS | Marinette | 1,093 | 1,100 | 11,040 | 9,400 | 12,133 | 10,500 |
| Norwood Health Center | Marshfield | PSYCH | Wood | 0 | 0 | 14,372 | 0 | 14,372 | 0 |
| Saint Joseph's Hospital | Marshfield | GMS | Wood | 1,527 | 1,822 | 5,453 | 6,572 | 6,980 | 8,394 |
| Mile Bluff Medical Center | Mauston | GMS | Juneau | 610 | 640 | 5,819 | 6,000 | 6,429 | 6,640 |
| Memorial Health Center, Inc | Medford | GMS | Taylor | 79 | 100 | 1,394 | 1,500 | 1,473 | 1,600 |
| Community Memorial Hospital | Menomonee Falls | GMS | Waukesha | 3,019 | 3,622 | 2,711 | 3,253 | 5,730 | 6,875 |
| Red Cedar Medical Center | Menomonie | GMS | Dunn | 176 | 215 | 1,886 | 2,390 | 2,062 | 2,605 |
| St. Mary's Hospital-Ozaukee | Mequon | GMS | Ozaukee | 6,301 | 6,301 | 6,454 | 6,454 | 12,755 | 12,755 |
| Good Samaritan Health Center | Merrill | GMS | Lincoln | 1,683 | 1,784 | 3,696 | 1,922 | 5,379 | 3,706 |
| Aurora Sinai Medical Center Inc | Milwaukee | GMS | Milwaukee | 6,160 | 7,040 | 17,718 | 19,363 | 23,878 | 26,403 |
| Children's Hospital of Wisconsin | Milwaukee | GMS | Milwaukee | 602 | 731 | 20,236 | 23,500 | 20,838 | 24,231 |
| Columbia Center | Milwaukee | GMS | Milwaukee | 9 | 9 | 298 | 298 | 307 | 307 |

| Name | City | Type | County | Charity Cases FY 2005 | Projected Charity Cases FY 2006 | Bad Debt Cases FY 2005 | Projected Bad Debt Cases FY 2006 | Total Uncomp. Cases FY 2005 | Projected Uncomp. Cases FY 2006 |
|--|------------------|------------|-------------|--------------------------|---------------------------------------|------------------------------|---|--------------------------------------|--|
| Total Wisconsin Hospitals | All | All | All | 250,037 | 275,892 | 715,044 | 759,987 | 965,081 | 1,035,879 |
| Columbia Hospital, Inc. | Milwaukee | GMS | Milwaukee | 5,926 | 5,926 | 8,279 | 8,279 | 14,205 | 14,205 |
| Froedtert Memorial Lutheran Hospital | Milwaukee | GMS | Milwaukee | 9,183 | 11,344 | 24,893 | 27,084 | 34,076 | 38,428 |
| LIFECARE Hospitals of Milwaukee | Milwaukee | GMS | Milwaukee | 0 | 0 | 0 | 0 | 0 | 0 |
| Sacred Heart Rehabilitation Institute | Milwaukee | REHAB | Milwaukee | 58 | 58 | 91 | 91 | 149 | 149 |
| Select Specialty Hospital – Milwaukee – St Luke’s | Milwaukee | GMS | Milwaukee | 0 | 0 | 35 | 24 | 35 | 24 |
| St Luke’s Medical Center | Milwaukee | GMS | Milwaukee | 9,146 | 9,860 | 29,174 | 31,575 | 38,320 | 41,435 |
| Wheaton Franciscan Healthcare- St. Francis Hospital, Inc. | Milwaukee | GMS | Milwaukee | 2,608 | 6,602 | 11,071 | 12,292 | 16,679 | 18,894 |
| Wheaton Franciscan Healthcare- St. Joseph’s Hospital, Inc. | Milwaukee | GMS | Milwaukee | 12,941 | 14,977 | 16,324 | 22,182 | 29,265 | 37,159 |
| St. Mary’s Hospital-Milwaukee | Milwaukee | GMS | Milwaukee | 15,105 | 15,105 | 18,625 | 18,625 | 33,730 | 33,730 |
| St. Michael Hospital | Milwaukee | GMS | Milwaukee | 7,970 | 7,381 | 14,330 | 169,32 | 22,300 | 24,313 |
| The Monroe Clinic | Monroe | GMS | Green | 3,467 | 3,723 | 1,078 | 1,176 | 4,545 | 4,899 |
| Children’s Hospital of Wisconsin – Fox Valley | Neenah | GMS | Winnebago | 0 | 0 | 274 | 236 | 274 | 236 |
| Theda Clark Medical Center | Neenah | GMS | Winnebago | 4,255 | 4,800 | 7,360 | 8,000 | 11,615 | 12,800 |
| Memorial Hospital Inc | Neillsville | GMS | Clark | 370 | 380 | 1,540 | 1,700 | 1,910 | 2,080 |
| New London Family Medical Center | New London | GMS | Outagamie | 158 | 176 | 3,002 | 3,482 | 3,160 | 3,658 |
| Holy Family Hospital | New Richmond | GMS | St. Croix | 15 | 25 | 2,100 | 1,600 | 2,115 | 1,625 |
| Oconomowoc Memorial Hospital | Oconomowoc | GMS | Waukesha | 216 | 180 | 6,066 | 5,568 | 6,282 | 5,748 |
| Rogers Memorial Hospital | Oconomowoc | PSYCH | Waukesha | 179 | 185 | 746 | 650 | 925 | 835 |
| Community Memorial Hospital | Oconto Falls | GMS | Oconto | 2,136 | 2,250 | 2,254 | 2,150 | 4,390 | 4,400 |
| Bond Health Center | Oconto Falls | GMS | Oconto | 2 | 30 | 2 | 22 | 4 | 52 |
| Osceola Medical Center | Osceola | GMS | Polk | 22 | 30 | 313 | 275 | 335 | 305 |
| Mercy Medical Center of Oshkosh | Oshkosh | GMS | Winnebago | 902 | 754 | 2,989 | 4,459 | 3,891 | 5,213 |
| Aurora Medical Center of Oshkosh | Oshkosh | GMS | Oshkosh | 864 | 1,050 | 4,050 | 4,250 | 4,914 | 5,300 |
| Osseo Medical Center | Osseo | GMS | Trempealeau | 65 | 65 | 410 | 450 | 475 | 515 |
| Flambeau Hospital, Inc. | Park Falls | GMS | Price | 292 | 200 | 977 | 1,200 | 1,269 | 1,400 |
| Southwest Health Center, Inc. | Platteville | GMS | Grant | 220 | 260 | 550 | 680 | 770 | 940 |
| Divine Savior Healthcare | Portage | GMS | Columbia | 402 | 450 | 6,10 | 6,300 | 6,612 | 6,750 |
| Prairie du Chien Memorial Hospital | Prairie Du Chien | GMS | Crawford | 286 | 312 | 1,800 | 1,975 | 2,086 | 2,287 |
| Sauk Prairie Memorial Hospital | Prairie du Sac | GMS | Sauk | 235 | 250 | 1,697 | 1,750 | 1,932 | 2,000 |
| Wheaton Franciscan Healthcare- All Saints, Inc. | Racine | GMS | Racine | 7,642 | 9,112 | 72,157 | 73,837 | 79,799 | 82,949 |
| Reedsburg Area Medical Center | Reedsburg | GMS | Sauk | 316 | 320 | 3,075 | 3,150 | 3,391 | 3,470 |
| Saint Mary’s Hospital, Inc. | Rhineland | GMS | Oneida | 2,659 | 3,457 | 4,858 | 5,149 | 7,517 | 8,606 |
| Lakeview Medical Center | Rice Lake | GMS | Barron | 92 | 114 | 1,399 | 1,340 | 1,491 | 1,454 |
| The Richland Hospital Inc | Richland Center | GMS | Richland | 28 | 34 | 1,375 | 1,450 | 1,403 | 1,484 |
| Ripon Medical Center | Ripon | GMS | Fond du Lac | 63 | 75 | 1,014 | 1,050 | 1,077 | 1,125 |
| River Falls Area Hospital | River Falls | GMS | St. Croix | 279 | 289 | 1,296 | 1,184 | 1,575 | 1,473 |

| Name | City | Type | County | Charity Cases FY 2005 | Projected Charity Cases FY 2006 | Bad Debt Cases FY 2005 | Projected Bad Debt Cases FY 2006 | Total Uncomp. Cases FY 2005 | Projected Uncomp. Cases FY 2006 |
|---|------------------|------------|-------------|--------------------------|---------------------------------------|------------------------------|---|--------------------------------------|--|
| Total Wisconsin Hospitals | All | All | All | 250,037 | 275,892 | 715,044 | 759,987 | 965,081 | 1,035,879 |
| Shawano Medical Center | Shawano | GMS | Shawano | 456 | 500 | 3,989 | 4,000 | 4,445 | 4,500 |
| Sheboygan Memorial/Valley View Medical Center | Sheboygan | GMS | Sheboygan | 1,072 | 982 | 3,973 | 4,198 | 5,045 | 5,180 |
| St. Nicholas Hospital | Sheboygan | GMS | Sheboygan | 1,599 | 1,500 | 2,707 | 3,000 | 4,306 | 4,500 |
| Indianhead Medical Center Shell Lake Inc | Shell Lake | GMS | Washburn | 0 | 2 | 157 | 150 | 157 | 152 |
| Franciscan Skemp Healthcare – Sparta | Sparta | GMS | Monroe | 150 | 160 | 300 | 325 | 450 | 485 |
| Spooner Health System | Spooner | GMS | Washburn | 423 | 400 | 1,821 | 1,600 | 2,244 | 2,000 |
| St. Croix Regional Medical Center, Inc. | St. Croix Falls | GMS | Polk | 145 | 165 | 1,290 | 1,430 | 1,435 | 1,595 |
| Our Lady of Victory | Stanley | GMS | Chippewa | 333 | 400 | 1,742 | 1,800 | 2,075 | 2,200 |
| Saint Michael's Hospital | Stevens Point | GMS | Portage | 3592 | 4705 | 7,773 | 8,861 | 11,365 | 13,566 |
| Stoughton Hospital Association | Stoughton | GMS | Dane | 137 | 130 | 1,224 | 1,200 | 1,361 | 1,330 |
| Door County Memorial Hospital | Sturgeon Bay | GMS | Door | 5171 | 5,326 | 6,929 | 7,037 | 12,100 | 12,363 |
| St. Mary's Hospital of Superior | Superior | GMS | Douglas | 842 | 970 | 3,100 | 3,300 | 3,942 | 4,270 |
| Tomah Memorial Hospital, Inc. | Tomah | GMS | Monroe | 258 | 300 | 2,205 | 2,300 | 2,463 | 2,600 |
| Sacred Heart Hospital, Inc. | Tomahawk | GMS | Lincoln | 462 | 562 | 1,024 | 1,085 | 1,456 | 1,647 |
| Aurora Medical Center of Manitowoc Co Inc | Two Rivers | GMS | Manitowoc | 1,027 | 1,193 | 2,654 | 2,689 | 3,681 | 3,882 |
| Vernon Memorial Hospital | Viroqua | GMS | Vernon | 999 | 1,100 | 4,144 | 4,400 | 5,143 | 5,500 |
| Lakeview NeuroRehab Center Midwest | Waterford | REHAB | Racine | 0 | 0 | 2 | 5 | 2 | 5 |
| Watertown Memorial Hospital | Watertown | GMS | Dodge | 1,518 | 1,767 | 4,875 | 4,999 | 6,393 | 6,766 |
| Waukesha County Mental Health Center | Waukesha | PSYCH | Waukesha | 0 | 0 | 0 | 0 | 0 | 0 |
| Waukesha Memorial Hospital, Inc. | Waukesha | GMS | Waukesha | 1,366 | 1,187 | 15,380 | 17,745 | 16,746 | 18,932 |
| Riverside Medical Center | Waupaca | GMS | Waupaca | 347 | 413 | 3,653 | 3,784 | 4,000 | 4,197 |
| Waupun Memorial Hospital | Waupun | GMS | Dodge | 618 | 660 | 1,288 | 1,288 | 1,906 | 1,648 |
| North Central Health Care Facilities | Wausau | PSYCH | Marathon | 2,216 | 2,500 | 392 | 425 | 2,608 | 2,925 |
| Aspirus Wausau Hospital | Wausau | GMS | Marathon | 2,228 | 2,339 | 7,203 | 8,067 | 9,431 | 10,406 |
| The Wisconsin Heart Hospital | Wauwatosa | GMS | Milwaukee | 91 | 170 | 589 | 444 | 680 | 614 |
| Aurora Psychiatric Hospital Inc | Wauwatosa | PSYCH | Milwaukee | 382 | 412 | 892 | 989 | 1,274 | 1,401 |
| Milwaukee County Behavioral Health Division | Wauwatosa | PSYCH | Milwaukee | 937 | 900 | 65 | 70 | 1002 | 970 |
| Rogers Memorial Hospital – Milwaukee | West Allis | PSYCH | Milwaukee | 80 | 50 | 814 | 750 | 894 | 800 |
| Select Specialty Hospital | West Allis | GMS | Milwaukee | 0 | 0 | 68 | 31 | 68 | 31 |
| West Allis Memorial Hospital | West Allis | GMS | Milwaukee | 29,983 | 31,482 | 8,014 | 7,670 | 37,997 | 39,152 |
| St. Joseph's Community Hospital | West Bend | GMS | Washington | 1,337 | 1,390 | 3,558 | 3,807 | 4,895 | 5,197 |
| Tri-County Memorial Hospital, Inc. | Whitehall | GMS | Trempealeau | 478 | 100 | 745 | 1,200 | 1,223 | 1,300 |
| Wild Rose Community Memorial Hospital Inc | Wild Rose | GMS | Waushara | 410 | 477 | 1,477 | 2,120 | 1,887 | 2,597 |
| Riverview Hospital Association | Wisconsin Rapids | GMS | Wood | 203 | 227 | 4,199 | 4,361 | 4,402 | 4,588 |
| Howard Young Medical Center, Inc. | Woodruff | GMS | Oneida | 389 | 4,300 | 4,685 | 12,400 | 5,074 | 13,700 |

APPENDIX 4:

Wisconsin Hospitals with County General Relief Revenue Greater than \$500,000 or
Greater than One Percent of Total Gross Revenue

FY 2005

| | City | Type | County | General Relief Gross Revenue | % of Total Gross Revenue | % Of Charges Reimbursed for General Relief |
|--|-------------|-------------|---------------|---|-------------------------------------|---|
| Froedtert Memorial Lutheran Hospital | Milwaukee | GMS | Milwaukee | \$18,340,000 | 1.8% | 34.2% |
| St Luke's Medical Center | Milwaukee | GMS | Milwaukee | \$9,979,520 | 0.5% | 18.2% |
| Wheaton Franciscan Healthcare- St. Joseph's Hospital, Inc. | Milwaukee | GMS | Milwaukee | \$8,228,971 | 1.3% | 20.6% |
| Aurora Sinai Medical Center Inc | Milwaukee | GMS | Milwaukee | \$6,725,280 | 1.7% | 4.7% |
| St. Michael Hospital | Milwaukee | GMS | Milwaukee | \$6,410,102 | 2.2% | 22.8% |
| St. Mary's Hospital-Milwaukee | Milwaukee | GMS | Milwaukee | \$5,454,930 | 0.9% | 66.1% |
| Wheaton Franciscan Healthcare- St. Francis Hospital, Inc. | Milwaukee | GMS | Milwaukee | \$3,821,050 | 0.6% | 18.0% |
| Children's Hospital of Wisconsin | Milwaukee | GMS | Milwaukee | \$1,152,605 | 0.2% | 21.6% |
| Columbia Hospital, Inc. | Milwaukee | GMS | Milwaukee | \$1,130,870 | 0.3% | 74.0% |
| West Allis Memorial Hospital | West Allis | GMS | Milwaukee | \$778,115 | 0.2% | 18.7% |

APPENDIX 5:

- FY 2005 Hospital Uncompensated Health Care Plan
- FY 2005 Hospital Fiscal Survey

**HOSPITAL UNCOMPENSATED HEALTH CARE PLAN
FISCAL YEAR 2005**

Completion of this form is required. Failure to complete and return this form to the WHA Information Center within 120 calendar days following the close of your hospital's fiscal year may result in a \$100 per day forfeiture.

GENERAL INSTRUCTIONS:

Items marked with an asterisk (*) are new for 2005.

Complete and return this form to the address below or by e-mail (whainfocenter@wha.org) within 120 days following the close of your hospital's fiscal year. Keep a copy for your records. Instructions and definitions are on pages 4 and 5.

| |
|--|
| WHA Information Center, LLC P.O. Box 259038 Madison, WI 53725-9038 |
|--|

I. HOSPITAL INFORMATION (Instructions for this section are on page 4.) *Type or print in black ink.*

Name of Administrator / CEO
Hospital Name and Address

«HOSPID»

«NAME»

«ADDRESS»«CITY»«STATE»«ZIP»

Contact Person (Name and Title)

Telephone Number

«CONTACT»«CONTITLE»

«PHONE»

() - Ext. #

Organization and Address (if different from hospital address above)

FY 2005 Beginning Date

«FYBEGIN»

_____/_____/_____
Mo. Day Yr.

FY 2005 Ending Date

«FYEND»

_____/_____/_____
Mo. Day Yr.

II. DEFINITIONS (Instructions for this section are on pages 4 and 5.)

Define any terms used in this plan that may be **subject to interpretation** including, but not limited to, the following:

Income – means

Utilization - means...

III. GENERAL INFORMATION

A. Eligibility for Financial Aid

1. Does your hospital have written policies to determine patients' ability to pay and eligibility for financial aid?*

«FAPOL»

Yes
 No

2. Does your hospital require applicants to complete a form to determine eligibility?*

«FAREQ»

Yes
 No

3. Does your hospital determine eligibility on the basis of the patient's income?*

«FAINC»

Yes
 No

4. Income threshold for financial aid eligibility:*

- To qualify for fee reduction:

 «FARED%» % of the federal poverty level. Or \$ «FARED\$» Per year
 N/A

- To qualify to have all fees waived:

 «FAWAIV%» % of the federal poverty level. Or \$ «FAREV\$» Per year
 N/A

5. Does the hospital consider assets in determining eligibility for financial aid?*

«FAASSE»

Yes
 No

6. Requested documentation of patient resources include (check all that apply):*

«FADOCS»

- W-2 forms and/or pay stubs
- Tax returns
- Bank statements
- Loan Documents
- Other: «FADOCSOTH» _____

7. Does the hospital’s review include a determination of eligibility for (check all that apply):*

«FAREV»

- Medicaid/BadgerCare
- General Relief
- Other government programs

B. Collection Policies

8. Does your hospital have written policies about when and under whose authority patient debt is advanced for collection?*

«CPDEBT»

- Yes
- No

9. Does your hospital review the patient’s record to determine if reasonable efforts were undertaken to determine if financial assistance should have been offered before assigning the case to a collection agency?*

«CPREC»

- Yes
- No

10. Does your hospital obtain written agreements from collection agencies that they will adhere to hospital-defined standards to be used by such agencies?*

«CPAGREE»

- Yes
- No

11. In seeking payment for an outstanding hospital bill, might your hospital seek to force a sale or foreclosure of a patient’s primary residence?*

«CPFORE»

- Yes
- No

12. In seeking payment for an outstanding hospital bill, might your hospital request that a patient be taken into police custody as a means of requiring the patient to appear in court?*

«CPPOLICE»

- Yes
- No

C. Role of Hospital Board

13. Is your hospital’s board provided with a report of charity care and financial aid at least once annually?*

«HBCHAR»

- Yes
- No

14. Does your hospital's board have a role in developing and/or approving financial aid policies?*

«HBDEV»

Yes

No

IV. INCOME DETERMINATION / VERIFICATION PROCEDURES (Instructions for this section are on page 5.)

A. Summarize the procedures used to determine a patient's ability to pay for health care services, as well as a description of your charity care program. (Attach additional pages if necessary.)

B. Summarize the procedures followed to verify financial information provided by the patient. (Attach additional pages if necessary.)

V. PROCEDURE FOR INFORMING THE PUBLIC

15. Does the hospital have procedures to inform the public about the availability of financial aid/charity care?*

«IPFA»

Yes

No

16. If yes, where/when is information made available (check all that apply):*

«IPINFO»

Emergency Rooms

Financial Service Offices

At time of registration

Other: «IPINFOOTH» _____

17. Does your hospital provide training to personnel who interact with patients about financial aid availability, how to communicate that availability to patients and how to direct patients to appropriate financial aid staff?*

«IPTRAIN»

Yes

No

18. Does your hospital make translation services available as needed?*

«IPTRANS»

Yes

No

HOSPITAL FISCAL SURVEY FISCAL YEAR 2005

Completion of this form is required. Failure to complete and return this form to the **WHA Information Center** within 120 calendar days following the close of your hospital's fiscal year may result in a \$100 per day forfeiture.

GENERAL INSTRUCTIONS - Read before completing form.

NOTE: Refer to the detailed instructions contained in the *Hospital Fiscal Survey Manual, Fiscal Year 2005*.

Fill in all lines. If information for a category is zero, fill in 0. If information for a category is not applicable, fill in 0. Do NOT use dashes. Do NOT use N/A. Do NOT use N/AV. Do not leave any lines blank.

Round all amounts to the nearest dollar.

Items marked with an asterisk (*) are new for 2005.

Complete and return this form to the address below (or e-mail to WHAInfoCenter@wha.org within 120 days following the close of your hospital's fiscal year. This date can also be found in the "Submittal Deadline" paragraph, page 4, in the manual.

| |
|--|
| WHA Information Center P.O. Box 259038 Madison WI 53725-9038 |
|--|

I. HOSPITAL INFORMATION

Type or print in black ink.

Hospital Administrator / CEO «CONTACT»
Hospital Name and Address «REHOSPN»
«REHOSPAD»
«REHOSCTY», «REHOSPST» «REHOSPZP»

«REHOSPID»

Contact Person (Name and Title)

«CONTACT»
«CONTITLE»

Telephone () «PHONE» - Ext.
Fax Number () -
E-mail Address

Organization and Address (if different from hospital address above)

FY 2005 Beginning Date «REBEGDT»

FY 2005 Ending Date «REENDDT»

II. GENERAL INFORMATION

If your hospital is jointly operated in connection with a nursing home, home health agency, or other organization, and is governed by a common Board of Directors, the hospital shall submit the required information from the final audited financial statements of the **hospital only** except where such information cannot be disaggregated. (See special instructions for combination facilities in the accompanying *Hospital Fiscal Survey Manual, Fiscal Year 2005*). All hospital services must be reported if they are included as hospital revenue and contained in net revenue from services to patients. Refer to page 2 - line 1.

Is your facility a combination facility? (Enter Yes or No in the box.)

For definitions and instructions, see the *Hospital Fiscal Survey Manual, Fiscal Year 2005*.

| |
|----------|
| «COMFAC» |
|----------|

STATEMENT OF REVENUE AND EXPENSES

| | | | |
|------------------------------------|---|---------------|-----------------------------|
| 1 | NET REVENUE FROM SERVICES TO PATIENTS | | <u>«TOTNETRV»</u> |
| Other Revenue | | | |
| 2 | Tax appropriations | \$ «OORTAX» | <u> </u> |
| 3 | All other operating revenue (including operating gains) | \$ «OORALL» | <u> </u> |
| 4 | TOTAL Other Revenue (add only lines 2 and 3; do not include line 1 in line 4) | | <u>\$ «TOTOOR»</u> |
| 5 | TOTAL REVENUE (add lines 1 and 4) | | <u>«TOTALREV»</u> |
| Payroll Expenses | | | |
| 6 | Physicians and dentists | \$ «PAYPHYD» | <u> </u> |
| 7 | Medical and dental residents and interns | \$ «PAYINT» | <u> </u> |
| 8 | Trainees | \$ «PAYTRA» | <u> </u> |
| 9 | Registered nurses and licensed practical nurses | \$ «PAYRNLP» | <u> </u> |
| 10 | All other personnel | \$ «PAYALLO» | <u> </u> |
| 11 | TOTAL Payroll Expenses (add lines 6 through 10) | | <u>\$ «TOTPAYE»</u> |
| Nonpayroll Expenses | | | |
| 12 | Employee benefits (Social Security, group insurance, retirement benefits, etc.) | \$ «NONPBEN» | <u> </u> |
| 13 | Professional fees (medical, dental, legal, auditing, consultant, etc.) | \$ «NONPFEE» | <u> </u> |
| 14 | Contracted nursing services (include staff from nursing registries and temporary help agencies) | \$ «NONPCNS» | <u> </u> |
| 15 | Depreciation expense (for reporting period only) | \$ «NONPDEP» | <u> </u> |
| 16 | Interest expense | \$ «NONPINT» | <u> </u> |
| 17 | Bad debt expense (must equal line 115) | \$ «ODBADDB» | <u> </u> |
| 18 | Medical malpractice insurance premiums | \$ «NONMALP» | <u> </u> |
| 19 | Amortization of financing expenses | \$ «NONPAMO» | <u> </u> |
| 20 | Rents and leases | \$ «NONPRL» | <u> </u> |
| 21 | Capital component of insurance premium | \$ «NONPCAP» | <u> </u> |
| 22 | All other operating expenses (include supplies, purchased services, utilities, property taxes, etc., and operating losses) | \$ «OTHOPEXP» | <u> </u> |
| 23 | TOTAL Nonpayroll Expenses (add lines 12 through 22) | | <u>\$ «TOTNPEXP»</u> |
| 24 | TOTAL EXPENSES (add lines 11 and 23) | | <u>«TOTEXPNS»</u> |
| 25 | Excess (or deficit) of revenue over expenses (subtract line 24 from line 5; see manual) | | <u>\$ «EXCESS»</u> |
| Nonoperating Gains / Losses | | | |
| 26 | Investment income | \$ «NONOPINV» | <u> </u> |
| 27 | Other nonoperating gains (including extraordinary gains) | \$ «NONOPOTH» | <u> </u> |
| 28 | Provision for income taxes (for-profit organizations) (absolute values only – no negative values) | \$ «NONOPTAX» | <u> </u> |
| 29 | Other nonoperating losses (including extraordinary losses) (absolute values only – no negative values) | \$ «NONOPLOS» | <u> </u> |
| 30 | TOTAL Nonoperating Gains / Losses (subtract sum of lines 28 and 29 from sum of lines 26 and 27) | | <u>\$ «TOTNONOP»</u> |
| 31 | NET INCOME (revenue and gains in excess of expenses and losses) (add lines 25 and 30) | | <u>\$ «NETINCOM»</u> |

III. DETAIL OF PATIENT SERVICE REVENUE (based on full established rates)

Gross Patient Service Revenue and Its Sources

| | | | |
|-----------|--|--|---|
| 32 | Gross revenue from room, board, and medical and nursing services to INPATIENTS | \$ «GRINPAT» | } (sum of lines 32 and 33 must equal sum of inpatient breakouts, lines 36-49) |
| 33 | Gross INPATIENT ancillary revenue | \$ «GRINPAN» | |
| 34 | Gross revenue from service to OUTPATIENTS | \$ «GROUTPAT» (must equal sum of outpatient breakouts, lines 36-49) | |
| 35 | TOTAL GROSS revenue from service to patients | | \$ «TOTGR» (add lines 32-34) |

NOTE: The following sources of gross patient revenue are by **TOTAL** dollar amounts and by separate **INPATIENT** and **OUTPATIENT** breakouts.

| <i>Public Sources</i> | TOTAL | INPATIENT | OUTPATIENT |
|--|--|---------------------------------|----------------------------------|
| 36 Medicare | \$ «SRCMDCR» | \$ «SINMDCR» | \$ «SOUTMDC» |
| 37 HMOs reimbursed by Medicare under 42 CFR pt. 417 | \$ «SRCSEP» | \$ «SINSEP» | \$ «SOUTSEP» |
| 38 Medical Assistance (Including BadgerCare) | \$ «SRCMAS» | \$ «SINMAS» | \$ «SOUTMAS» |
| 39 HMOs reimbursed by Medical Assistance under s. 49.45 (3) (b), Wis. Stats | \$ «SRCHMOR» | \$ «SINHMOR» | \$ «SOUTHMOR» |
| 40 County General Relief | \$ «SRCCGR» | | |
| 41 County 51.42 / 51.437 programs | \$ «SRCCTYP» | \$ «SINPUB» | \$ «SOUTPUB» |
| 42 All other public programs | \$ «SRCALLP» | (add lines 40-42 for Inpatient) | (add lines 40-42 for Outpatient) |
| Commercial Sources | | | |
| 43 Group and individual accident and health insurance, self-funded plans | \$ «SRCINS» | | |
| 44 Worker's compensation | \$ «SRCWCOM» | \$ «SINCOM» | \$ «SOUTCOM» |
| 45 HMOs and all other alternative health care payment systems (exclude lines 37 and 39) | \$ «SRCHMO» | (add lines 43-45 for Inpatient) | (add lines 43-45 for Outpatient) |
| 46 Self-pay | \$ «SRSELF» | | |
| All other sources (specify below) | | | |
| 47 _____ | \$ «SRCNP1» | \$ «SINNPS» | \$ «SOUTNPS» |
| 48 _____ | \$ «SRCNP2» | (add lines 46-49 for Inpatient) | (add lines 46-49 for Outpatient) |
| 49 _____ | \$ «SRCNP3» | | |
| 50 TOTAL GROSS revenue from service to patients, by source | \$ «TOTLA4» (add lines 36-49) [should equal dollar value on line 35] | | |

Deductions from Patient Service Revenue and Its Sources

NOTE: Contractual Adjustments are by **TOTAL** dollar amounts **and** by separate **INPATIENT** and **OUTPATIENT** breakouts.

| | TOTAL | INPATIENT | OUTPATIENT |
|--|--|---|---|
| Public Source Contractual Adjustments | | | |
| 51 Medicare | \$ «DEDMDCR» | \$ «CINMDCR» | \$ «COUTMDC» |
| 52 HMOs reimbursed by Medicare under 42 CFR pt. 417 | \$ «DEDSP» | \$ «CINSEP» | \$ «COUTSEP» |
| 53 Medical Assistance | \$ «DEDMAS» | \$ «CINMAS» | \$ «COUTMAS» |
| 54 HMOs reimbursed by Medical Assistance under s. 49.45 (3) (b), Wis Stats. | \$ «DEDHMOR» | \$ «CINHMO» | \$ «COUTHMO» |
| 55 County General Relief | \$ «DEDCGR» | } \$ «CINPUB» (add lines 55-57 for Inpatient) | } \$ «COUTPUB» (add lines 55-57 for Outpatient) |
| 56 County 51.42 / 51.437 programs | \$ «DEDCTY» | | |
| 57 All other public programs | \$ «DEDALLO» | | |
| Commercial Source Contractual Adjustments | | | |
| 58 Group and individual accident and health insurance, self-funded plans | \$ «DEDINS» | } \$ «CINCMP» (add lines 58-60 for Inpatient) | } \$ «COUTCMP» (add lines 58-60 for Outpatient) |
| 59 Worker's compensation | \$ «DEDWCOM» | | |
| 60 HMOs and all other alternative health care payment systems (exclude lines 52 and 54) | \$ «DEDHMO» | | |
| Other Source Contractual Adjustments | | | |
| All other sources (specify below) | | | |
| 61 _____ | \$ «DEDNPU1» | } \$ «CINNPS» (add lines 61-63 for Inpatient) | } \$ «COUTNPS» (add lines 61-63 for Outpatient) |
| 62 _____ | \$ «DEDNPU2» | | |
| 63 _____ | \$ «DEDNPU3» | | |
| 64 Charity care (revenue foregone at full established rates) (must equal line 114) | \$ «ODCHAR» | | |
| 65 All other noncontractual deductions | \$ «ODNONC» | | |
| 66 TOTAL DEDUCTIONS FROM REVENUE | \$ «TOTDFRV» | | |
| | (add lines 51-65) (total, not breakouts) | | |

Medicare-Approved Medical Education Activities

NOTE: Of TOTAL expenses in line 24, the reimbursable expenses for Medicare-approved medical education activities separated into the following categories:

| | |
|--|--------------|
| 67 Direct medical education expenses | \$ «EDDIRM» |
| 68 Indirect medical education expenses | \$ «EDIDIRM» |
| 69 TOTAL reimbursable expenses for Medicare-approved medical education activities (add lines 67 and 68) | \$ «TOTMEDA» |

IV. BALANCE SHEET – GENERAL FUNDS

NOTE: For combination facilities, state-operated mental health institutes, or county-operated psychiatric or alcohol or other drug abuse hospitals, see special instructions in the *Hospital Fiscal Survey Manual, Fiscal Year 2005*.

Unrestricted Assets (recorded on the balance sheet at the end of each reporting period)

Current Assets

| | | |
|----|--|---------------|
| 70 | Cash and cash equivalents | \$ «CCSTINVS» |
| 71 | Inter-corporate account(s) | \$ «INCORPAC» |
| 72 | Net patient accounts receivable Total Net patient accounts receivable«REHOSPID» | \$ «NTPATAR» |
| 73 | Other accounts receivable | \$ «OTHAR» |
| 74 | Other current assets | \$ «OTCURAST» |
| 75 | TOTAL current assets (add lines 70 through 74) | \$ «TOTCURAS» |
| 76 | Noncurrent assets whose use is limited | \$ «NCLTDUSE» |

Property, Plant and Equipment

Gross Plant Assets

| | | |
|----|---|--------------|
| 77 | Land | \$ «LAND» |
| 78 | Land improvements | \$ «LANDIMP» |
| 79 | Buildings and building improvements | \$ «BUILD» |
| 80 | Construction in progress | \$ «CIP» |
| 81 | Fixed equipment | \$ «FIXEQP» |
| 82 | Moveable equipment | \$ «MOVEQP» |
| 83 | TOTAL gross plant assets (add lines 77 through 82) | \$ «TOTGPA» |

LESS Accumulated Depreciation (absolute values only – no negative values)

| | | |
|----|--|---------------|
| 84 | Land improvements | \$ «LSLANDIM» |
| 85 | Buildings and building improvements | \$ «LSBUILD» |
| 86 | Fixed equipment | \$ «LSFXEQP» |
| 87 | Moveable equipment | \$ «LSMVEQP» |
| 88 | TOTAL accumulated depreciation (add lines 84 through 87) | \$ «TOTACCDP» |
| 89 | NET property, plant, and equipment assets (subtract line 88 from line 83) | \$ «NTPTEQAS» |
| 90 | Long-term investments | \$ «LTINVST» |
| 91 | Other unrestricted assets | \$ «OTHENRES» |
| 92 | TOTAL unrestricted assets (add lines 75, 76, 89, 90 and 91) | \$ «TOTUNRES» |

Unrestricted Liabilities, Deferred Revenues, and Fund Balances

| | | |
|----|--|---------------|
| 93 | Current liabilities | \$ «CURRLIAB» |
| 94 | Inter-corporate account(s) | \$ «INCORLIB» |
| 95 | Long-term debt | \$ «LTDEBT» |
| 96 | Other noncurrent liabilities and deferred revenues | \$ «OTHLIAB» |
| 97 | Unrestricted fund balances | \$ «UNREFUND» |
| 98 | TOTAL unrestricted liabilities, deferred revenues, and fund balances (add lines 93 through 97). (NOTE: lines 92 and 98 should be equal. Combination facilities, see manual instructions) | \$ «TOTUNLIB» |

Restricted Hospital Funds (report fund balances only)

| | | |
|-----|---|---------------|
| 199 | Specific-purpose funds | \$ «SPECPURP» |
| 100 | Plant replacement and expansion funds | \$ «PTRPEXF» |
| 101 | Endowment funds | \$ «ENDOWFD» |

V. HOSPITAL INPATIENT UTILIZATION BY PAY SOURCE (for current reporting period)

| | (A1) | (A2) | (B1) | (B2) |
|--|---------------------------------------|---------------------------------|-------------------------|---|
| PAY SOURCE | NUMBER OF INPATIENT DISCHARGES* | NUMBER OF DISCHARGE DAYS* | NUMBER OF NEWBORNS** | NUMBER OF NEWBORN DISCHARGE DAYS** |
| 102 Medicare (T-18) Including HMOs reimbursed by T-18 | «DISMEDA» | «DIDMEDA» | «BIRMEDA» | «BIDMEDA» |
| 103 Medical Assistance (T-19) Including HMOs reimbursed by T-19 | «DISMASA» | «DIDMASA» | «BIRMASA» | «BIDMASA» |
| 104 Self-Pay* | «DISSPAY» | «DIDSPAY» | «BIRSPAY» | «BIDSPAY» |
| 104 a All other pay sources | «DISAOTH» | «DIDAOTH» | «BIRAOOTH» | «BIDAOTH» |
| 105 TOTALS | «DISTOT» | «DIDTOT» | «BIRTOT» | «BIDTOT» |

* This figure should include all inpatients discharged during the reporting period. Report the number of adult, pediatric, and intensive and intermediate care neonatal patients (including deaths). Exclude newborn, Medicare-certified swing bed, and hospital unit transfer patients.

* New item for 2005

** Exclude fetal deaths.

| | (C1) | (C2) |
|--|---|---|
| PAY SOURCE | NUMBER OF DISCHARGES FROM MEDICARE- CERTIFIED SWING BEDS*** | NUMBER OF DISCHARGE DAYS FROM MEDICARE- CERTIFIED SWING BEDS*** |
| 106 Medicare (T-18) Including HMOs reimbursed by T-18 | «SWGMedA» | «SWIDMedA» |
| 107 Medical Assistance (T-19) Including HMOs reimbursed by T-19 | «SWGMA SA» | «SWIDMA SA» |
| 108 Self- Pay* | «SWGSPAY» | «SWIDSPAY» |
| 108a All other pay sources | «SWG AO TH» | «SWID AO TH» |
| 109 TOTALS | «SWG TOT» | «SWID TOT» |

*** Include both skilled and intermediate Medicare-certified swing beds.

VI. SUMMARY AND EXPLANATION OF REVENUE DOLLAR DIFFERENCES BETWEEN FY 2004 AND FY 2005

| | GROSS REVENUE | NET REVENUE |
|--|-----------------------|-----------------------|
| 110 Fiscal Year 2005 [line 35 (gross) and line 1 (net)] | \$ «TOTGRCY» _____ | \$ «TOTNRCY» _____ |
| 111 Fiscal Year 2004 [FY 2004 Fiscal Survey form line 35 (gross) and line 1 (net)] | \$ «TOTGRPY» _____ | \$ «TOTNRPY» _____ |
| 112 Increase / Decrease 2005 v. 2004 (subtract line 111 from line 110) [indicate + or -] | \$ «TOTDDG» _____ | \$ «TOTDDN» _____ |
| 113 Explain in a short narrative the relative importance of various causes for the dollar differences (lines 110 and 111) in the fiscal year revenue figures (price change, utilization change, other causes?). Attach additional page(s) if necessary. | | |

VII. UNCOMPENSATED HEALTH CARE

Charges for Uncompensated Health Care

| | FY 2005 | FY 2006(Projected) |
|---|-------------------------|---------------------------|
| 114 Charges for charity care provided for the fiscal year | \$ «CHCHRCY» _____ | \$ «CHCHRNY» _____ |
| | (from line 64) | |
| 115 Charges determined to be a bad debt expense for the fiscal year | \$ «BDCHRCY» _____ | \$ «BDCHRNY» _____ |
| | (from line 17) | |
| 116 TOTAL charges for uncompensated health care for the fiscal year | \$ «TOTCHCY» _____ | \$ «TOTCHNY» _____ |
| | (add lines 114 and 115) | (add lines 114 and 115) |

Number of "Patients" Receiving Uncompensated Health Care

(See manual for definitions – the number of "patients" should be reported as the number of individual patient visit ledgers.)

| | FY 2005 | FY 2006 (Projected) |
|--|--------------------|----------------------------|
| 117 Number of individual patient visit ledgers that received charity care for the fiscal year | «VLCHACY» _____ | «VLCHANY» _____ |
| 118 Number of individual patient visit ledgers whose charges were determined to be bad debt for the fiscal year | «VLBDACY» _____ | «VLBDNY» _____ |

119 Provide a **rationale** for the hospital's fiscal year 2006 projections in the space below. Explain how the projections used "patients" and total charges for fiscal year 2005, if at all. It could also include a description of the socioeconomic climate of your hospital's market and how that affects your hospital's Uncompensated Health Care Plan. Attach additional page(s) if necessary.

Hill-Burton Uncompensated Health Care Information

120 Does the hospital have current obligations under this program?
Enter Yes, No, or C (for conditional) on this line. «CURROB»

121 If YES, enter date(s) the obligation(s) went into effect and date(s) the obligation(s) will be satisfied.

| | |
|--|--|
| <u>Effective beginning date(s)</u> | <u>Projected satisfaction date(s)</u> |
| Month / Year «OBMOYR1»/«OBYR1» _____ | Month / Year «SATOBMOYR1»/«SATOBYR1» _____ |
| Month / Year «OBMOYR2»/«OBYR2» _____ | Month / Year «SATOBMOYR2»/«SATOBYR2» _____ |
| Month / Year | Month / Year |

«OBMO3»/«OBYR3»

«SATO BMO3»/«SATO BYR3»

122 If YES, enter the amount of total federal assistance believed to remain under obligation. \$ «TOTOB»