

FTP Clients

- ❖ Recommended FTP Clients
- ❖ FTP Configuration – CuteFTP 6 Pro
- ❖ FTP Configuration – SmartFTP
- ❖ FTP Configuration – WS_FTP Pro

Recommended FTP Clients

The descriptions and pricing information for FTP Clients that support secure file transfers using SSL (Secure Sockets Layer) below were taken from each company's website as of 09/13/2004. Please reference each website for current pricing and information regarding their product.

1. **CuteFTP Professional** – <http://www.globalscape.com/cuteftp/>

Integrates state-of-the-art security standards to ensure that confidential business data stays that way.

Pricing for CuteFTP 6.0 Professional

Delivery via internet (email)

- Single User – \$59.99
- Single User – w/Maintenance - \$94.99
- Single User – Upgrade - \$29.99
- 5-User – \$260.95
- 5-User – w/Maintenance - \$313.15
- 10-User - \$497.90
- 10-User – w/Maintenance - \$597.50

Delivery via CD-ROM – Prices are same as above but also add shipping.

2. **WS_FTP Professional** – http://ipswitch.com/products/WS_FTP/index.html

Transfers your crucial and sensitive data easily, securely and reliably. *The smarter way to transfer files.*

Pricing for WS_FTP Professional

Delivery via internet (web delivery)

- Single User – \$54.95
- Single User – w/Service Agreement - \$84.95
- Single User – Upgrade - \$29.95

Delivery via CD-ROM – Prices are same as above but also add shipping.

3. **SmartFTP** – <http://www.smartftp.com>

Pricing for SmartFTP

Delivery via internet (download)

- Single User – \$29.95
- Single User – w/Maintenance - \$36.95

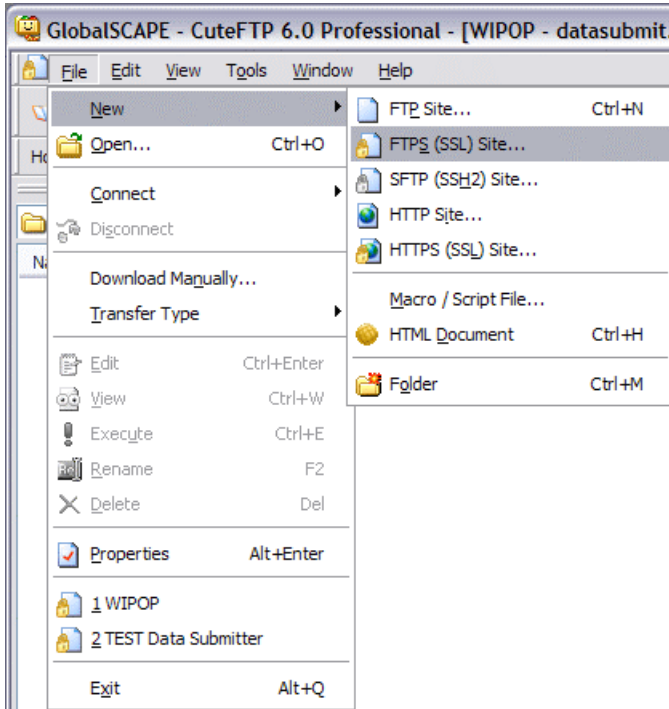
There are other FTP Clients that offer SSL support, however, the above have been utilized by WHA Information Center staff and are recommended products if your facility would like to upload files via the FTP Server.

FTP Server upload is recommended by WHA Information Center for large files, and for multiple facilities. All facilities are welcome to use the FTP server to upload their files for data submission; however, it is not a requirement to the data submission process.

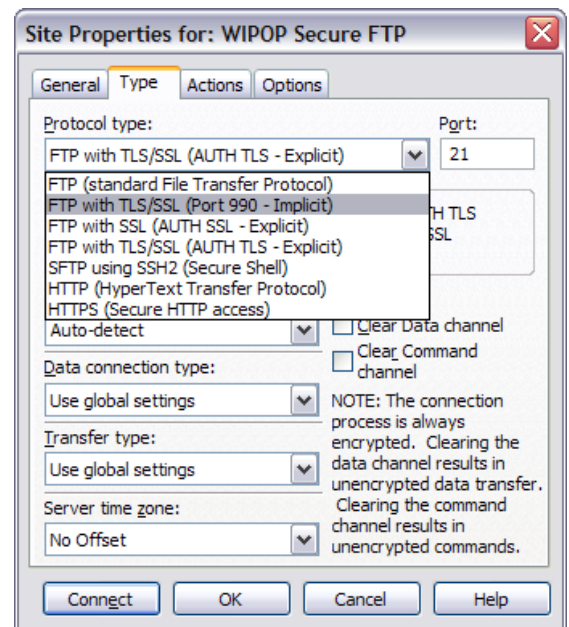
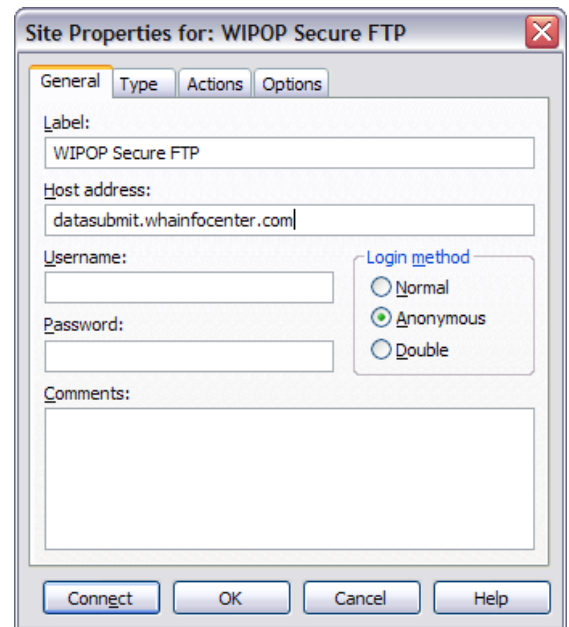
Configuring CuteFTP 6 Pro for SSL Connections

These instructions are designed to step you through the process of setting up CuteFTP Pro 6 to access WHA Information Center's secure FTP server for the purpose of uploading patient batch files. This configuration is designed to work with the majority of network configurations. If you have problems connecting or uploading to our FTP Server contact WHA Information Center at whainfocenter@wha.org.

1. Using the file menu select **File -> New -> FTPS (SSL) Site...**



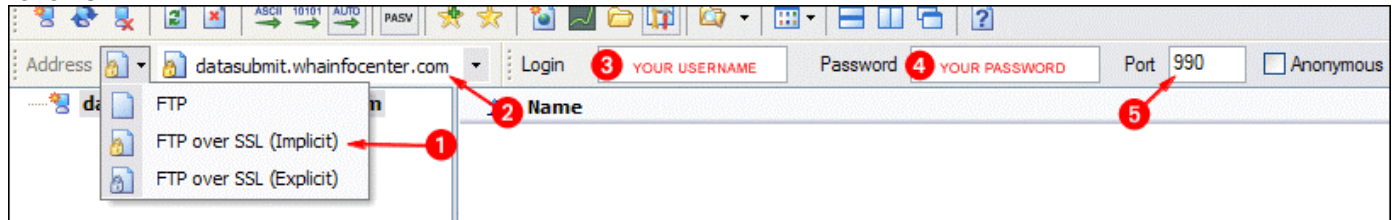
2. Enter any name you wish to use to identify the FTP Connection (e.g. WIPOP Secure FTP) in the **Label** text box.
3. Enter **datasubmit.whainfocenter.com** in the **Host Address** text box.
4. Enter the same **case-sensitive Username** and **Password** that you use to logon to the web interface into the **Username** and **Password** text boxes.
5. Click the **Type** tab (at the top of the same dialog box).
6. In the **Protocol type** drop down list, select **FTP with TLS/SSL (Port 990 – Implicit)**.
7. Click **OK** or **Connect** if you wish to connect to the WHA Information Center secure FTP server.
8. Upload your file(s) to the WHA Information Center secure FTP Server.



Configuring SmartFTP for SSL Connections

These instructions are designed to step you through the process of setting up SmartFTP to access WHA Information Center's secure FTP server for the purpose of uploading patient batch files. This configuration is designed to work with the majority of network configurations. If you have problems connecting or uploading to our FTP Server contact WHA Information Center at whainfocenter@wha.org.

I. Configure the FTP Connection Properties. On the main SmartFTP screen set the FTP properties as follows:



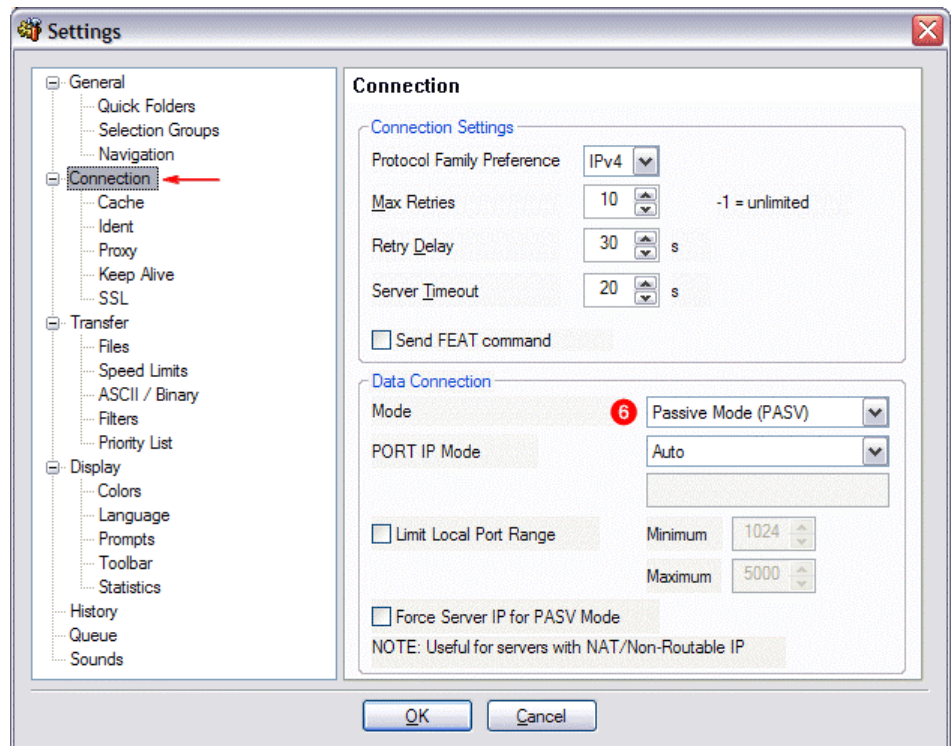
1. Click the icon just to the left of the word **Address** and select **FTP over SSL (Implicit)**.
2. In the **Address** text box enter **datasubmit.whainfocenter.com**.
3. Enter your **Username** into the **Login** text box. This is the same **Username** used to logon to the web-based data submission application.
4. Enter your **Password** into the **Password** text box. This is the same **Password** used to logon to the web-based data submission application.
5. Enter **990** in the **Port** text box.

II. Configure the FTP Settings.

From the top menu, select **Tools** then **Settings**.

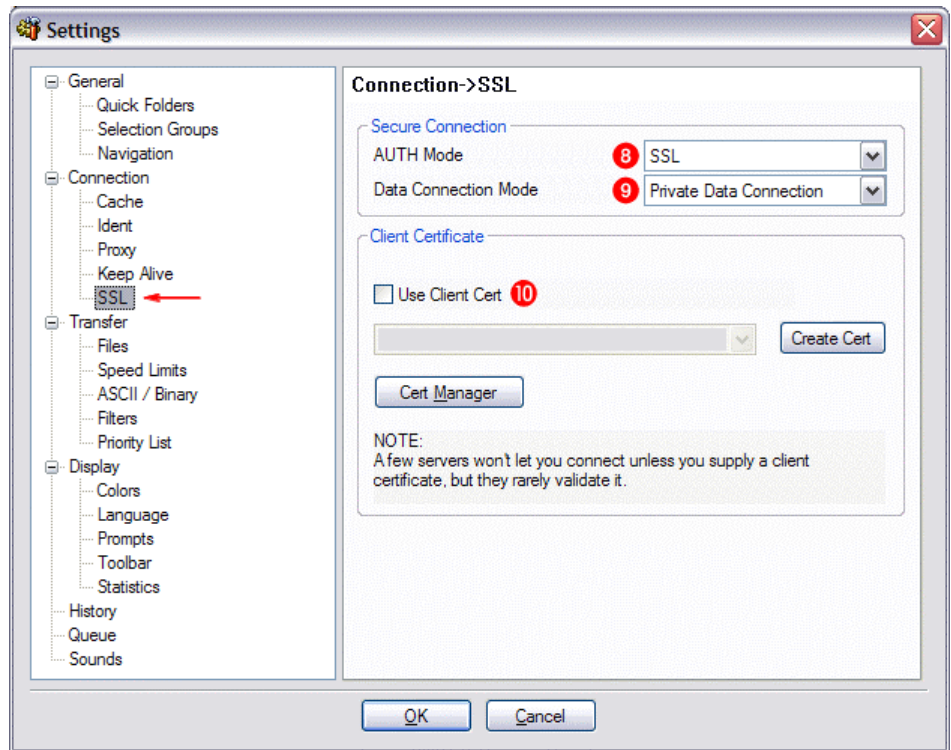
On the left hand navigation tree select **Connection**.

6. Ensure that the **Mode** option under **Data Connection** is set to **Passive Mode (PASV)**.



On the left hand navigation tree under **Connection** select **SSL**.

7. Under **Secure Connection** select **SSL** in the **AUTH Mode** drop down box.
8. Ensure that **Private Data Connection** is selected in the **Data Connection Mode** drop down box.
9. Ensure that the check box for **Use Client Cert** is **cleared** (unchecked).
10. Click on **OK** to save your settings and return to the main FTP screen.

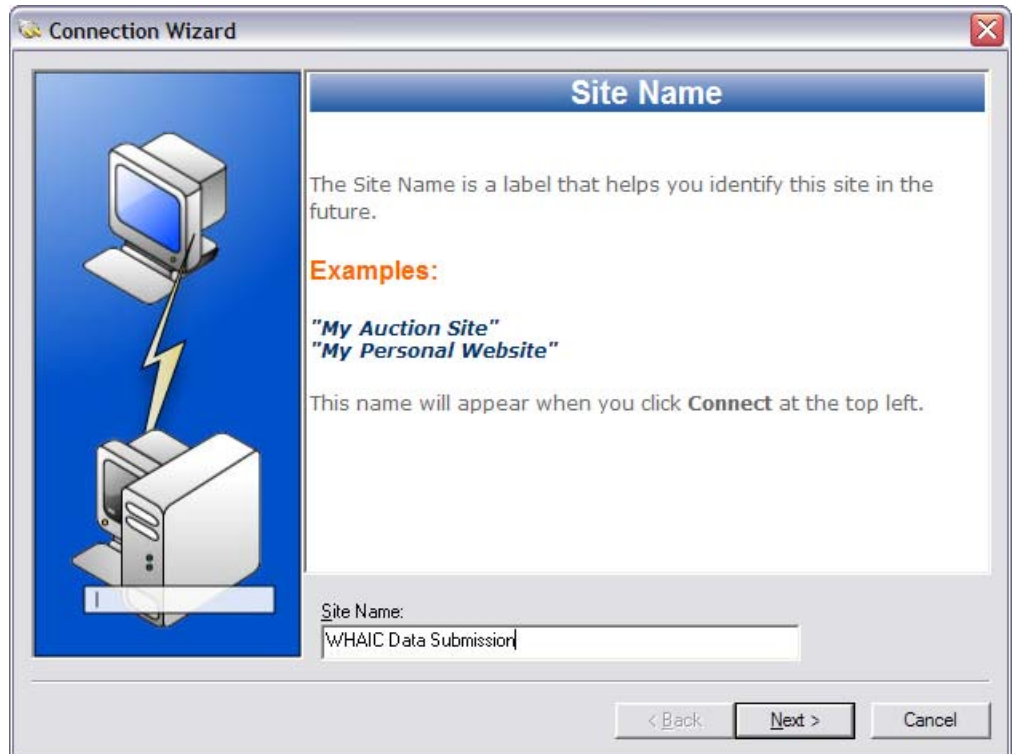


Use **Enter** on your keyboard to connect to WHA Information Center's secure FTP server.
Upload your file(s) to WHA Information Center's secure FTP server.

Configuring WS_FTP PRO for SSL Connections

These instructions are designed to step you through the process of setting up WS_FTP PRO to access WHA Information Center's secure FTP server for the purpose of uploading patient batch files. This configuration is designed to work with the majority of network configurations. If you have problems connecting or uploading to our FTP Server contact WHA Information Center at whainfocenter@wha.org.

1. Open WS_FTP Pro and Select **File -> Connect... -> Connection Wizard**.
2. In the **Site Name** text box enter a name you wish to use to identify this FTP connection (e.g. WIPOP Secure FTP).
3. Click **Next**.



4. In the **Server Address** text box enter the ftp address: **datasubmit.whainfocenter.com**.
5. Click **Next**.



6. Enter the same **case-sensitive Username** and **Password** that you use to logon to the web interface into the **Username** and **Password** text boxes.
7. Click **Next**.



8. In the **Connection Type** drop down list select **FTP/Implicit SSL**.
9. Click **Next**.



7. Click **Finish**.
8. **Accept** the certificate if a dialog box appears requesting you to do so.



Upload your file(s) to the WHA Information Center secure FTP server.